

Introduction

Real-Time Embedded Systems (RTESs) are soft or hard, based on how strict their timing constraints are. Safety-critical RTESs are systems whose failure would lead to the loss of human lives or environmental disaster.

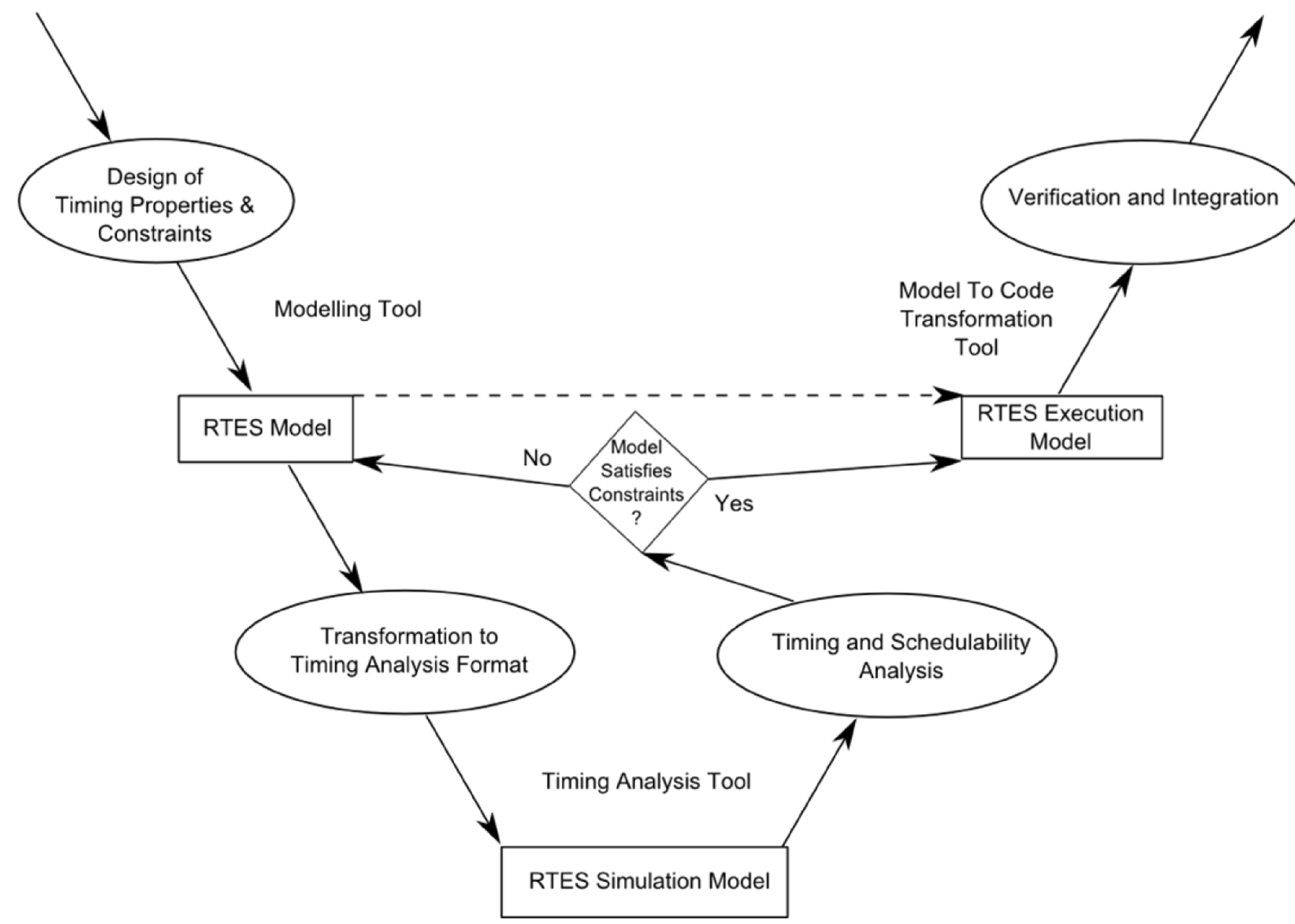


Figure 1. Model-based development

Performance and timing analysis, the key features of RTES development, can be done in the early development stages using model-based engineering (Figure 1).

Objectives

- 1) Review of state-of-the-art modelling languages for RTESs (Table 1).

	Timing in	First release	Latest release	Developed by	Inspired by
UML	SimpleTime	UML 1.0 (1997)	UML 2.4.1 (2011)	OMG	Booch, OMT/OOD ¹
SPT	Time Domain Model	SPT 1.0 (2003)	SPT 1.1 (2005)	OMG	UML
MARTE	Time Package	MARTE 1.0 (2009)	MARTE 1.1 (2011)	OMG	SPT
SysML	-	SysML 1.0a (2005)	SysML v1.3 (2012)	INCOSE, OMG	UML
AADL	Timing Properties	AADL v1.0 (2004)	AADL v2.1 (2012)	SAE	MetaH
AUTOSAR	Timing Extensions	AUTOSAR (2003)	AUTOSAR 4.1 (2013)	AUTOSAR Partnership	-
EAST-ADL	TADL Concepts	EAST-ADL1.0 (2004)	EAST-ADL 2.1 (2010)	FP7 EAST-EEA	AUTOSAR

¹ UML originated from the Booch method, Object-Modeling Technique (OMT), and Object-Oriented Design (OOD)

Table 1. Summary of the modelling languages that have been reviewed

- 2) Case study: Analysis of TIMMO-2-USE's validator of a Brake-By-Wire (BBW) system in a vehicle modelled in EAST-ADL.

EAST-ADL is a high level abstraction of AUTOSAR. It introduces 4 abstraction levels:

- Vehicle Level: Technical Feature Model
- Analysis Level: Functional Analysis Architecture
- Design Level: Functional and Hardware Design Architecture
- Implementation Level: AUTOSAR compliant code

The BBW model by TIMMO-2-USE includes multiform timing constraints: *The vehicle shall start to brake within 5 meters after the brake pedal is pressed.*

- 3) Design of a model of a BBW system in MARTE

MARTE is a UML profile for RTESs. We used custom Clocks, the TimedConstraint stereotype and non-functional properties from MARTE, Requirements from SysML, and OCL (Figure 2).

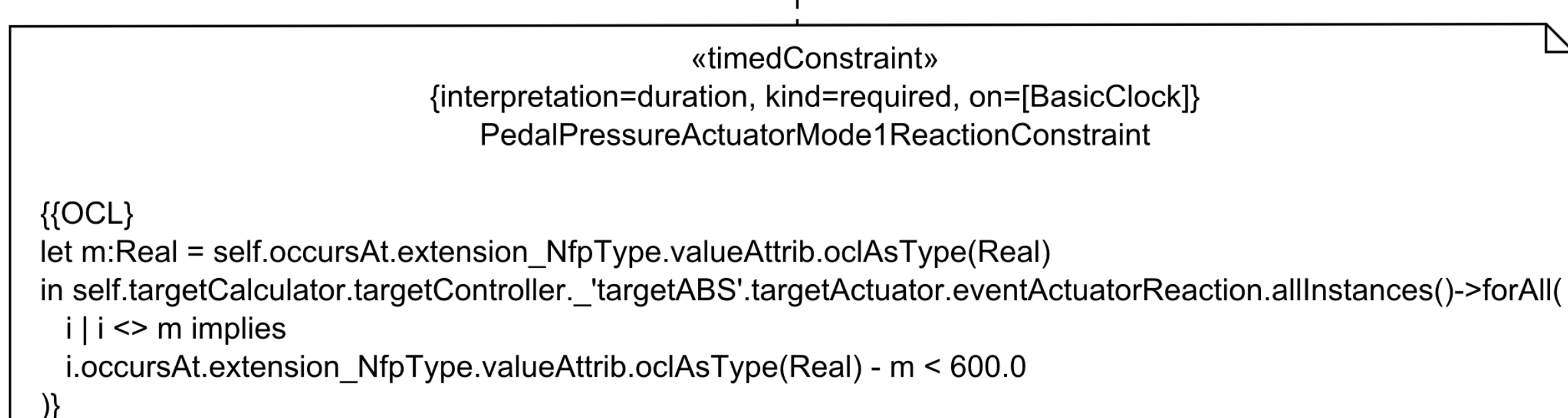


Figure 2. A MARTE class diagram constraint

Conclusions

Timing constraints can be specified using different mechanisms in all of the state-of-the-art modelling languages for RTESs.

TIMMO-2-USE's BBW system modelled in EAST-ADL shows how EAST-ADL (and TADL) can be used in a model-based development of an RTES. A large number of tools can be used for modelling, implementation, and timing analysis but it is difficult to use a single tool-chain.

Our BBW model shows how MARTE (using elements from SysML and OCL) can be used in a model-based development of an RTES from the automotive industry.

Table 2. shows a comparison of the different timing constraints in EAST-ADL and MARTE. Although MARTE has shortcomings compared to EAST-ADL, the possibility of using the tools:

- *Acceleo* for code-generation
- *Cheddar* for timing analysis

directly on a MARTE model promise a simple single tool-chain approach to modelling, implementation and timing analysis.

EAST-ADL Timing Constraint (value)	MARTE Timing Constraint (value)
Reaction (upper)	TimedConstraint («nfp» class property:TimeUnit)
Execution (upper)	TimedConstraint (class property:Real)
Periodic (period)	TimedConstraint (class property:Real)
InputSynchronization (upper)	TimedConstraint («nfp» class property:TimeUnit)
OutputSynchronization (upper)	TimedConstraint («nfp» class property:TimeUnit)

Table 2. Comparison of EAST-ADL and MARTE timing constraints

References

- Temelkovski, D., Beus-Dukic, L. (2014). Model-Based Engineering in Real-Time Embedded Systems: Specifying Timing Constraints. In Madevska Bogdanova, A. and Gjorgjevikj, D. *ICT Innovations 2014, Web Proceedings, 6th ICT Innovations Conference on*. Ohrid, Macedonia. 9-12 September 2014. Skopje: ICT ACT, 2014, 230-239.
- Temelkovski, D., Beus-Dukic, L. (2014). Specifying timing requirements in domain specific languages for modeling. In Stojanović, R., Józwiak, L. and Jurišić, D. *Embedded Computing (MECO), 3rd Mediterranean Conference on*. Budva, Montenegro. 15-19 June 2014. IEEE, 2014, 264-267
- André, C., Mallet, C., Peraldi-Frati, M-A. (2007). A multiform time approach to real-time system modeling; application to an automotive system. In *Industrial Embedded Systems, SIES'07, International Symposium on*. Lisbon, Portugal. 4-6 July 2007. IEEE, 2007. 234-241.
- Espinoza, H., Gérard, S., Lönn, H., Kolagari, R.T. (2009). Harmonizing MARTE, EAST-ADL2, and AUTOSAR to Improve the Modelling of Automotive Systems. In *STANDRTS, 21st Euromicro Conference on Real-Time Systems (ECRTS 09), Satellite workshop of*. Dublin, Ireland. 30 June 2009.
- Iqbal, M. Z., Ali, S., Yue, T., Briand, L. (2012). Experiences of Applying UML/MARTE on Three Industrial Projects. In *Model Driven Engineering Languages and Systems (MODELS 2012), 15th International Conference on*. Innsbruck, Austria. 30 September-5 October 2012. LNCS 7590. Springer, 2012, 642-658
- ITEA (no date). *TIMMO-2-USE*. [online] ITEA. Available from: <https://itea3.org/project/timmo-2-use.html> [Accessed 30 October 2014]
- EAST-ADL Association (2014) *EAST-ADL Specification*. [online] EAST-ADL Association. Available from: <http://www.east-adl.info/Specification.html> [Accessed 30 October 2014]
- OMG (2013). *MARTE*. [online] OMG. Available from: <http://www.omgarte.org/> [Accessed 30 October 2014]

Acknowledgements & Contact Details

This research has been supported by the EUROWEB Project funded by the Erasmus Mundus Action II programme of the European Commission.

Damjan Temelkovski
damjan.temelkovski@my.westminster.ac.uk

Ljerka Beus-Dukic
l.beus-dukic@westminster.ac.uk

University of Westminster
115 New Cavendish Street
London W1W 6UW