

**WestminsterResearch**

<http://www.westminster.ac.uk/westminsterresearch>

**Fractionating Human Intelligence**

**Hampshire, A., Parkin, B., Highfield, R. and Owen, Adrian M.**

This is the published version of the article Hampshire, A., Parkin, B., Highfield, R. and Owen, Adrian M. (2012) Fractionating Human Intelligence *Neuron* 76 (6) 1225–1237 0896-6273 . It is available at <https://dx.doi.org/10.1016/j.neuron.2012.06.022>.

© 2012 Elsevier Inc. It is made available under the Elsevier Use License  
[https://www.elsevier.com/about/company-information/policies/open-access...](https://www.elsevier.com/about/company-information/policies/open-access)

---

The WestminsterResearch online digital archive at the University of Westminster aims to make the research output of the University available to a wider audience. Copyright and Moral Rights remain with the authors and/or copyright owners.

---

Whilst further distribution of specific materials from within this archive is forbidden, you may freely distribute the URL of WestminsterResearch: (<http://westminsterresearch.wmin.ac.uk/>).

In case of abuse or copyright appearing without permission e-mail [repository@westminster.ac.uk](mailto:repository@westminster.ac.uk)

# Fractionating Human Intelligence

Adam Hampshire,<sup>1,\*</sup> Roger R. Highfield,<sup>2</sup> Beth L. Parkin,<sup>1</sup> and Adrian M. Owen<sup>1</sup>

<sup>1</sup>The Brain and Mind Institute, The Natural Sciences Centre, Department of Psychology, The University of Western Ontario, London ON, N6A 5B7, Canada

<sup>2</sup>Science Museum, Exhibition Road, London SW72DD, UK

\*Correspondence: [ahampshi@uwo.ca](mailto:ahampshi@uwo.ca)

<http://dx.doi.org/10.1016/j.neuron.2012.06.022>

## SUMMARY

What makes one person more intellectually able than another? Can the entire distribution of human intelligence be accounted for by just one general factor? Is intelligence supported by a single neural system? Here, we provide a perspective on human intelligence that takes into account how general abilities or “factors” reflect the functional organization of the brain. By comparing factor models of individual differences in performance with factor models of brain functional organization, we demonstrate that different components of intelligence have their analogs in distinct brain networks. Using simulations based on neuroimaging data, we show that the higher-order factor “g” is accounted for by cognitive tasks corecruiting multiple networks. Finally, we confirm the independence of these components of intelligence by dissociating them using questionnaire variables. We propose that intelligence is an emergent property of anatomically distinct cognitive systems, each of which has its own capacity.

## INTRODUCTION

Few topics in psychology are as old or as controversial as the study of human intelligence. In 1904, Charles Spearman famously observed that performance was correlated across a spectrum of seemingly unrelated tasks (Spearman, 1904). He proposed that a dominant general factor “g” accounts for correlations in performance between all cognitive tasks, with residual differences across tasks reflecting task-specific factors. More controversially, on the basis of subsequent attempts to measure “g” using tests that generate an intelligence quotient (IQ), it has been suggested that population variables including gender (Irwing and Lynn, 2005; Lynn, 1999), class (Burt, 1959, 1961; McManus, 2004), and race (Rushton and Jensen, 2005) correlate with “g” and, by extension, with one’s genetically predetermined potential. It remains unclear, however, whether population differences in intelligence test scores are driven by heritable factors or by other correlated demographic variables such as socioeconomic status, education level, and motivation (Gould, 1981; Horn and Cattell, 1966). More relevantly, it is questionable whether they relate to a unitary intelligence factor,

as opposed to a bias in testing paradigms toward particular components of a more complex intelligence construct (Gould, 1981; Horn and Cattell, 1966; Mackintosh, 1998). Indeed, over the past 100 years, there has been much debate over whether general intelligence is unitary or composed of multiple factors (Carroll, 1993; Cattell, 1949; Cattell and Horn, 1978; Johnson and Bouchard, 2005). This debate is driven by the observation that test measures tend to form distinctive clusters. When combined with the intractability of developing tests that measure individual cognitive processes, it is likely that a more complex set of factors contribute to correlations in performance (Carroll, 1993).

Defining the biological basis of these factors remains a challenge, however, due in part to the limitations of behavioral factor analyses. More specifically, behavioral factor analyses do not provide an unambiguous model of the underlying cognitive architecture, as the factors themselves are inaccessible, being measured indirectly by estimating linear components from correlations between the performance measures of different tests. Thus, for a given set of behavioral correlations, there are many factor solutions of varying degrees of complexity, all of which are equally able to account for the data. This ambiguity is typically resolved by selecting a simple and interpretable factor solution. However, interpretability does not necessarily equate to biological reality. Furthermore, the accuracy of any factor model depends on the collection of a large number of population measures. Consequently, the classical approach to intelligence testing is hampered by the logistical requirements of pen and paper testing. It would appear, therefore, that the classical approach to behavioral factor analysis is near the limit of its resolution.

Neuroimaging has the potential to provide additional constraint to behavioral factor models by leveraging the spatial segregation of functional brain networks. For example, if one homogeneous system supports all intelligence processes, then a common network of brain regions should be recruited whenever difficulty increases across all cognitive tasks, regardless of the exact stimulus, response, or cognitive process that is manipulated. Conversely, if intelligence is supported by multiple specialized systems, anatomically distinct brain networks should be recruited when tasks that load on distinct intelligence factors are undertaken. On the surface, neuroimaging results accord well with the former account. Thus, a common set of frontal and parietal brain regions is rendered when peak activation coordinates from a broad range of tasks that parametrically modulate difficulty are smoothed and averaged (Duncan and Owen, 2000). The same set of multiple demand (MD) regions is activated during tasks that load on “g” (Duncan, 2005; Jung

and Haier, 2007), while the level of activation within frontoparietal cortex correlates with individual differences in IQ score (Gray et al., 2003). Critically, after brain damage, the size of the lesion within, but not outside of, MD cortex is correlated with the estimated drop in IQ (Woolgar et al., 2010). However, these results should not necessarily be equated with a proof that intelligence is unitary. More specifically, if intelligence is formed from multiple cognitive systems and one looks for brain responses during tasks that weigh most heavily on the “g” factor, one will most likely corecruit all of those functionally distinct systems. Similarly, by rendering brain activation based on many task demands, one will have the statistical power to render the networks that are most commonly recruited, even if they are not always corecruited. Indeed, there is mounting evidence demonstrating that different MD regions respond when distinct cognitive demands are manipulated (Corbetta and Shulman, 2002; D’Esposito et al., 1999; Hampshire and Owen, 2006; Hampshire et al., 2008, 2011; Koechlin et al., 2003; Owen et al., 1996; Petrides, 2005). However, such a vast array of highly specific functional dissociations have been proposed in the neuroimaging literature as a whole that they often lack credibility, as they fail to account for the broader involvement of the same brain regions in other aspects of cognition (Duncan and Owen, 2000; Hampshire et al., 2010). The question remains, therefore, whether intelligence is supported by one or multiple systems, and if the latter is the case, which cognitive processes those systems can most broadly be described as supporting. Furthermore, even if multiple functionally distinct brain networks contribute to intelligence, it is unknown whether the capacities of those networks are independent or are related to the same set of diffuse biological factors that modulate general neural efficiency. It is unclear, therefore, whether the pattern of individual differences in intelligence reflects the functional organization of the brain.

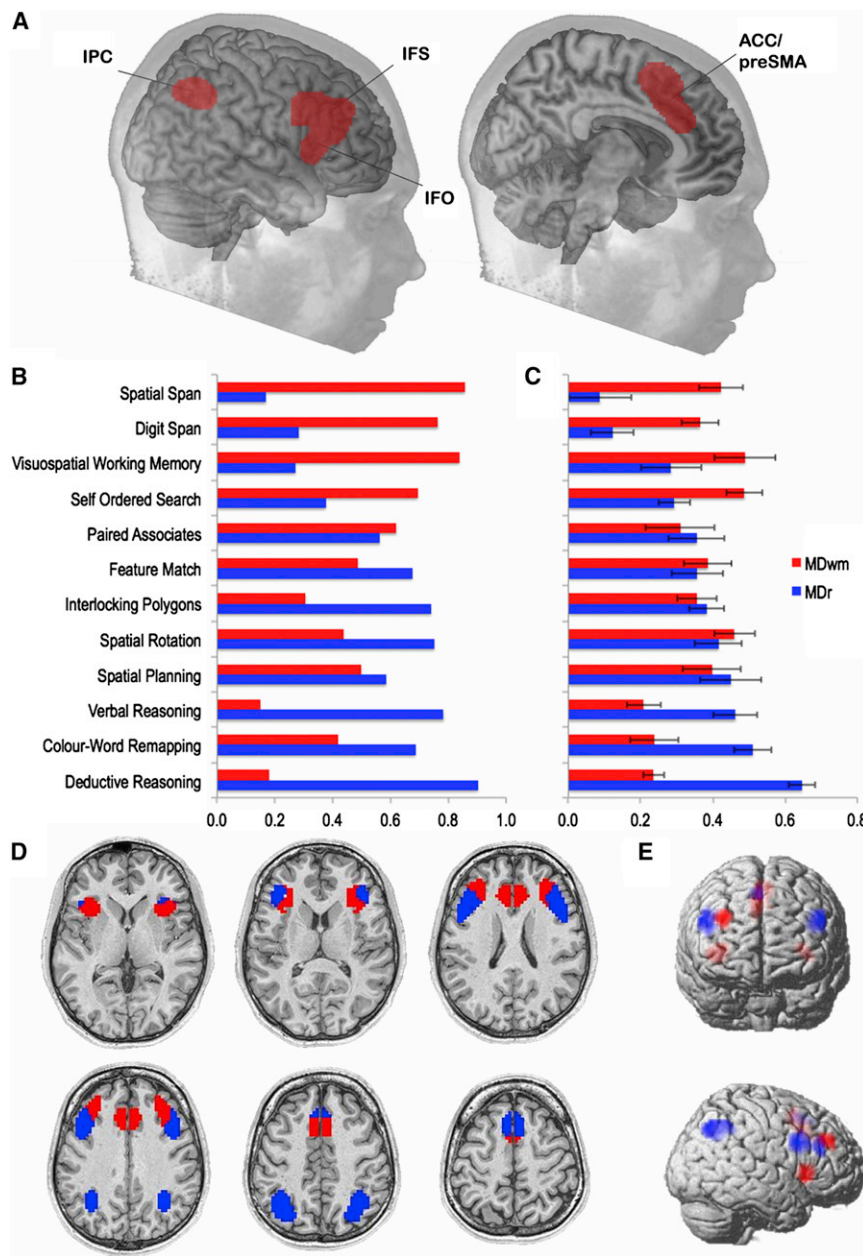
Here, we address the question of whether human intelligence is best conceived of as an emergent property of functionally distinct brain networks using factor analyses of brain imaging, behavioral, and simulated data. First, we break MD cortex down into its constituent functional networks by factor analyzing regional activation levels during the performance of 12 challenging cognitive tasks. Then, we build a model, based on the extent to which the different functional networks are recruited during the performance of those 12 tasks, and determine how well that model accounts for cross-task correlations in performance in a large ( $n = 44,600$ ) population sample. Factor solutions, generated from brain imaging and behavioral data, are compared directly, to answer the question of whether the same set of cognitive entities is evident in the functional organization of the brain and in individual differences in performance. Simulations, based on the imaging data, are used to determine the extent to which correlations between first-order behavioral components are predicted by cognitive tasks recruiting multiple functional brain networks, and the extent to which those correlations may be accounted for by a spatially diffuse general factor. Finally, we examine whether the behavioral components of intelligence show a degree of independence, as evidenced by dissociable correlations with the types of questionnaire variable that “g” has historically been associated with.

## RESULTS AND DISCUSSION

### Identifying Functional Networks within MD Cortex

Sixteen healthy young participants undertook the cognitive battery in the MRI scanner. The cognitive battery consisted of 12 tasks, which, based on well-established paradigms from the neuropsychology literature, measured a range of the types of planning, reasoning, attentional, and working memory skills that are considered akin to general intelligence (see [Supplemental Experimental Procedures](#) available online). The activation level of each voxel within MD cortex was calculated separately for each task relative to a resting baseline using general linear modeling (see [Supplemental Experimental Procedures](#)) and the resultant values were averaged across participants to remove between-subject variability in activation—for example, due to individual differences in regional signal intensity.

The question of how many functionally distinct networks were apparent within MD cortex was addressed using exploratory factor analysis. Voxels within MD cortex ([Figure 1A](#)) were transformed into 12 vectors, one for each task, and these were examined using principal components analysis (PCA), a factor analysis technique that extracts orthogonal linear components from the 12-by-12 matrix of task-task bivariate correlations. The results revealed two “significant” principal components, each of which explained more variability in brain activation than was contributed by any one task. These components accounted for ~90% of the total variance in task-related activation across MD cortex ([Table S1](#)). After orthogonal rotation with the Varimax algorithm, the strengths of the task-component loadings were highly variable and easily comprehensible ([Table 1](#) and [Figure 1B](#)). Specifically, all of the tasks in which information had to be actively maintained in short-term memory, for example, spatial working memory, digit span, and visuospatial working memory, loaded heavily on one component (MDwm). Conversely, all of the tasks in which information had to be transformed in mind according to logical rules, for example, deductive reasoning, grammatical reasoning, spatial rotations, and color-word remapping, loaded heavily on the other component (MDr). When factor scores were generated at each voxel using regression and projected back onto the brain, two clearly defined functional networks were rendered ([Figure 1D](#)). Thus, the insula/frontal operculum (IFO), the superior frontal sulcus (SFS), and the ventral portion of the anterior cingulate cortex/ presupplementary motor area (ACC/preSMA) had greater MDwm component scores, whereas the inferior frontal sulcus (IFS), inferior parietal cortex (IPC), and the dorsal portion of the ACC/preSMA had greater MDr component scores. When the PCA was rerun with spherical regions of interest (ROIs) centered on each MD subregion, with radii that varied from 10 to 25 mm in 5 mm steps and excluding voxels that were on average deactivated, the task loadings correlated with those from the MD mask at  $r > 0.95$  for both components and at all radii. Thus, the PCA solution was robust against variations in the extent of the ROIs. When data from the whole brain were analyzed using the same method, three significant components were generated, the first two of which correlated with those from the MD cortex analysis (MDr  $r = 0.76$ , MDwm  $r = 0.83$ ), demonstrating that these were the most prominent active-state networks in the brain. The factor solution was also reliable at



**Figure 1. Factor Analyzing Functional Brain Imaging Data from within Multiple Demand Cortex**

(A) The MD cortex ROIs.

(B) PCA of the average activation patterns within MD cortex for each task (x axis reports task-component loading).

(C) PCA with each individual's data included as separate columns (error bars report SEM).

(D) Component scores from the analysis of MD task-related activations averaged across individuals. Voxels that loaded more heavily on the MDwm component are displayed in red. Voxels that loaded more heavily on the MDr network are displayed in blue.

(E) T contrasts of component scores against zero from the PCA with individual data concatenated into 12 columns (FDR corrected at  $p < 0.05$  for all MD voxels).

scores were estimated at each voxel and projected back into two sets of 16 brain maps. When t contrasts were calculated against zero at the group level, the same MDwm and MDr functional networks were rendered (Figure 1E).

While the PCA works well to identify the number of significant components, a potential weakness for this method is that the unrotated task-component loadings are liable to be formed from mixtures of the underlying factors and are heavily biased toward the component that is extracted first. This weakness necessitates the application of rotation to the task-component matrix; however, rotation is not perfect, as it identifies the task-component loadings that fit an arbitrary set of criteria designed to generate the simplest and most interpretable solution. To deal with this potential issue, the task-functional network loadings were recalculated using independent component analysis (ICA), an analysis technique that exploits the more powerful properties of

the individual subject level. Rerunning the same PCA on each individual's data generated solutions with two significant components in 13/16 cases. There was one three-component solution and two four-component solutions. Rerunning the two-component PCA with each individual's data set included as 12 separate columns (an approach that did not constrain the same task to load on the same component across participants) demonstrated that the pattern of task-component loadings was also highly reliable at the individual subject level (Figure 1C). In order to test the reliability of the functional networks across participants, the data were concatenated instead of averaged into 12 columns (an approach that does not constrain the same voxels to load on the same components across individuals), and component

statistical independence to extract the sources from mixed signals. Here, we used ICA to extract two spatially distinct functional brain networks using gradient ascent toward maximum entropy (code adapted from Stone and Porri, 1999). The resultant components were broadly similar, although not identical, to those from the PCA (Table 1). More specifically, all tasks loaded positively on both independent brain networks but to highly varied extents, with the short-term memory tasks loading heavily on one component and the tasks that involved transforming information according to logical rules loading heavily on the other. Based on these results, it is reasonable to conclude that MD cortex is formed from at least two functional networks, with all 12 cognitive tasks recruiting both networks but to highly variable extents.



**Table 1. PCA and ICA of Activation Levels in 2,275 MD Voxels during the Performance of 12 Cognitive Tasks**

	PCA		ICA	
	MDr	MDwm	MDr	MDwm
Self-ordered search	0.38	0.69	1.45	3.26
Visuospatial working memory	0.27	0.84	1.24	2.68
Spatial span	0.17	0.86	0.51	2.23
Digit span	0.28	0.76	0.76	2.20
Paired associates	0.56	0.62	1.90	1.97
Spatial planning	0.58	0.50	2.43	2.74
Feature match	0.68	0.49	2.00	0.88
Interlocking polygons	0.74	0.31	2.11	0.61
Verbal reasoning	0.78	0.15	2.62	0.60
Spatial rotation	0.75	0.44	2.86	1.88
Color-word remapping	0.69	0.42	3.07	0.95
Deductive reasoning	0.90	0.18	3.98	0.19
PCA/ICA correlation MDr	$r = 0.92$			
PCA/ICA correlation MDwm	$r = 0.81$			

### The Relationship between the Functional Organization of MD Cortex and Individual Differences in Intelligence: Permutation Modeling

A critical question is whether the loadings of the tasks on the MDwm and MDr functional brain networks form a good predictor of the pattern of cross-task correlations in performance observed in the general population. That is, does the same set of cognitive entities underlay the large-scale functional organization of the brain and individual differences in performance? It is important to note that factor analyses typically require many measures. In the case of the spatial factor analyses reported above, measures were taken from 2,275 spatially distinct “voxels” within MD cortex. In the case of the behavioral analyses, we used scores from ~110,000 participants who logged in to undertake Internet-optimized variants of the same 12 tasks. Of these, ~60,000 completed all 12 tasks and a post task questionnaire. After case-wise removal of extreme outliers, null values, nonsense questionnaire responses, and exclusion of participants above the age of 70 and below the age of 12, exactly 44,600 data sets, each composed of 12 standardized task scores, were included in the analysis (see [Experimental Procedures](#)).

The loadings of the tasks on the MDwm and MDr networks from the ICA were formed into two vectors. These were regressed onto each individual's set of 12 standardized task scores with no constant term. When each individual's MDwm and MDr beta weights (representing component scores) were varied in this manner, they centered close to zero, showed no positive correlation (MDwm mean beta =  $0.05 \pm 1.78$ ; MDr mean beta =  $0.11 \pm 2.92$ ; MDwm-MDr correlation  $r = -0.20$ ), and, importantly, accounted for 34.3% of the total variance in performance scores. For comparison, the first two principal components of the behavioral data accounted for 36.6% of the variance. Thus, the model based on the brain imaging data captured close to the maximum amount of variance that could

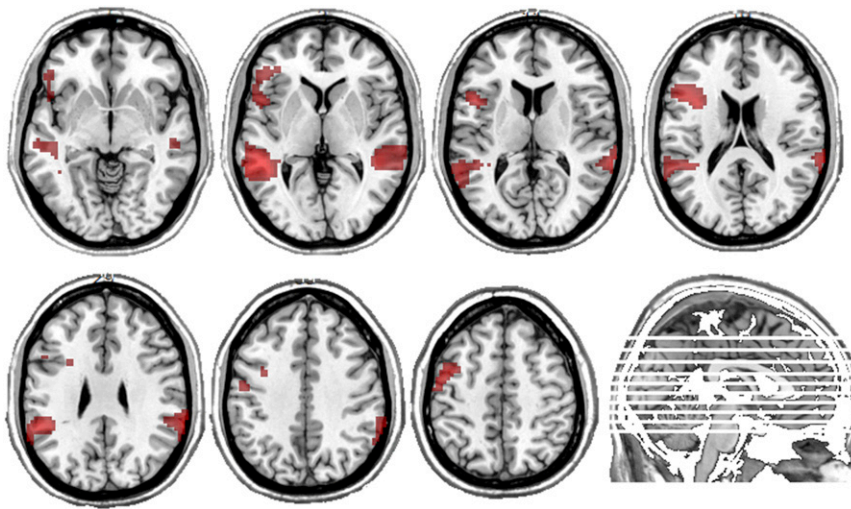
**Table 2. Task-Component Loadings from the PCA of Internet Data with Orthogonal Rotation**

	1 (STM)	2 (Reasoning)	3 (Verbal)
Spatial span	0.69	0.22	
Visuospatial working memory	0.69	0.21	
Self-ordered search	0.62	0.16	0.16
Paired associates	0.58		0.25
Spatial planning	0.41	0.45	
Spatial rotation	0.14	0.66	
Feature match	0.15	0.57	0.22
Interlocking polygons		0.54	0.3
Deductive reasoning	0.19	0.52	-0.14
Digit span	0.26	-0.2	0.71
Verbal reasoning		0.33	0.66
Color-word remapping	0.22	0.35	0.51

be accounted for by the two best-fitting orthogonal linear components. The average test-retest reliability of the 12 tasks, collected in an earlier Internet cohort ([Table S2](#)), was 68%. Consequently, the imaging ICA model predicted >50% of the reliable variance in performance. The statistical significance of this fit was tested against 1,000 permutations, in which the MDwm and MDr vectors were randomly rearranged both within and across vector prior to regression. The original vectors formed a better fit than the permuted vectors in 100% of cases, demonstrating that the brain imaging model was a significant predictor of the performance data relative to models with the same fine-grained values and the same level of complexity. Two further sets of permutation tests were carried out in which one vector was held constant and the other randomly permuted 1,000 times. When the MDwm vector was permuted, the original vectors formed a better fit in 100% of cases. When the MDr vector was permuted, the original vectors formed a better fit in 99.3% of cases. Thus, both the MDwm and the MDr vectors were significant predictors of individual differences in behavioral performance.

### The Relationship between the Functional Organization of MD Cortex and Individual Differences in Intelligence: Similarity of Factor Solutions

Exploratory factor analysis was carried out on the behavioral data using PCA. There were three significant behavioral components that each accounted for more variance than was contributed by any one test ([Table S3](#)) and that together accounted for 45% of the total variance. After orthogonal rotation with the Varimax algorithm, the first two components showed a marked similarity to the loadings of the tasks on the MDwm and MDr networks ([Table 2](#)). Thus, the first component (STM) included all of the tasks in which information was held actively on line in short-term memory, whereas the second component (reasoning) included all of the tasks in which information was transformed in mind according to logical rules. Correlation analyses between the task to functional brain network loadings and the task to behavioral component loadings confirmed that the two approaches generated broadly similar solutions (STM-MDwm



**Figure 2. Localizing the Functional-Anatomical Correlates of the Verbal Component**

When task-component loadings for the verbal factor from the behavioral analysis were standardized and used as a predictor of activation within the whole brain, a left lateralized network was rendered, including the left inferior frontal gyrus, and temporal lobe regions bilaterally ( $p < 0.05$  FDR corrected for the whole brain mass).

$r = 0.79$ ,  $p < 0.001$ ; reasoning-MD  $r = 0.64$ ,  $p < 0.05$ ). The third behavioral component was readily interpretable and easily comprehensible, accounting for a substantial proportion of the variance in the three tasks that used verbal stimuli (Table 2), these being digit span, verbal reasoning, and color-word remapping. A relevant question regards why there was no third network in the analysis of the MD cortex activation data. One possibility was that a spatial equivalent of the verbal component did exist in MD cortex but that it accounted for less variance than was contributed by any one task in the imaging analysis. Extracting three-component PCA and ICA solutions from the imaging data did not generate an equivalent verbal component, a result that is unsurprising, as a defining characteristic of MD cortex is its insensitivity to stimulus category (Duncan and Owen, 2000). A more plausible explanation was that the third behavioral component had a neural basis in category-sensitive brain regions outside of MD cortex. In line with this view, the task-factor loadings from the third behavioral component correlated closely with those from the additional third component extracted from the PCA of all active voxels within the brain ( $r = 0.82$ ,  $p < 0.001$ ). In order to identify brain regions that formed a likely analog of the verbal component, the task-component loadings were standardized so that they had unit deviation and zero mean and were used to predict activation unconstrained within the whole brain mass (see Experimental Procedures). Regions including the left inferior frontal gyrus and the bilateral temporal lobes were significantly more active during the performance of tasks that weighed on the verbal component (Figure 2). This set of brain regions had little overlap with MD cortex, an observation that was formalized using  $t$  tests on the mean beta weights from within each of the anatomically distinct MD cortex ROIs. This liberal approach demonstrated that none of the MD ROIs were significantly more active for tasks that loaded on the verbal component ( $p > 0.05$ , uncorrected and one tailed).

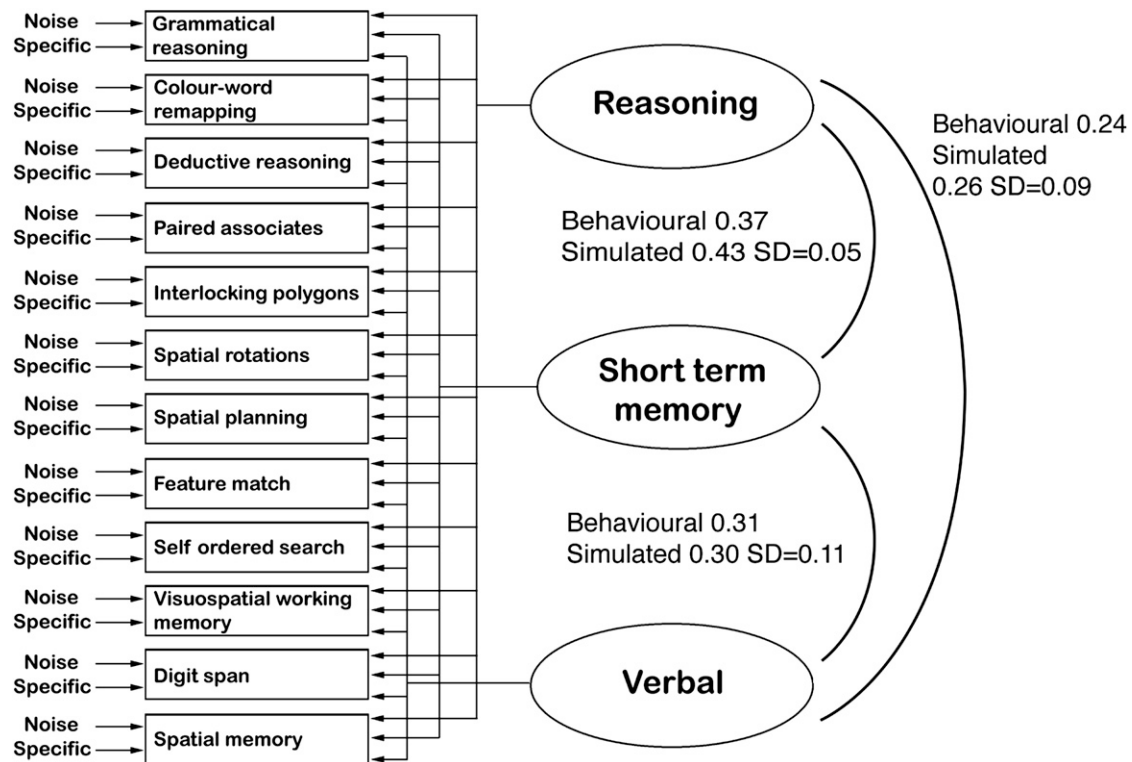
#### Determining the Likely Neural Basis of Higher-Order Components

Based on this evidence, it is reasonable to infer that the behavioral factors that underlie correlations in an individual's

performance on tasks of the type typically considered akin to intelligence have a basis in the functioning of multiple brain networks. This observation allows novel insights to be derived regarding the likely basis of higher-order components. More specifically, in classical intelligence testing, first-order components gener-

ated by factor analyzing the correlations between task scores are invariably correlated positively if allowed to rotate into their optimal oblique orientations. A common approach is to undertake a second-order factor analysis of the correlations between the obliquely orientated first-order components. The resultant second-order component is often denoted as "g." This approach is particularly useful when tasks load heavily on multiple components, as it can simplify the task to first-order component weightings, making the factor solution more readily interpretable. A complication for this approach, however, is that the underlying source of this second-order component is ambiguous. More specifically, while correlations between first-order components from the PCA may arise because the underlying factors are themselves correlated (for example, if the capacities of the MDwm and MDr networks were influenced by some diffuse factor like conductance speed or plasticity), they will also be correlated if there is "task mixing," that is, if tasks tend to weigh on multiple independent factors. In behavioral factor analysis, these accounts are effectively indistinguishable as the components or latent variables cannot be measured directly. Here, we have an objective measure of the extent to which the tasks are mixed, as we know, based on the functional neuroimaging data, the extent to which the tasks recruit spatially separated functional networks relative to rest. Consequently, it is possible to subdivide "g" into the proportion that is predicted by the mixing of tasks on multiple functional brain networks and the proportion that may be explained by other diffuse factors (Figure 3).

Two simulated data sets were generated; one based on the loadings of the tasks on the MDwm and MDr functional networks (2F) and the other including task activation levels for the verbal network (3F). Each of the 44,600 simulated "individuals" was assigned a set of either two (2F) or three (3F) factor scores using a random Gaussian generator. Thus, the underlying factor scores represented normally distributed individual differences and were assumed to be completely independent in the simulations. The 12 task scores were assigned for each individual by multiplying the task-functional network loadings from the ICA of the neuroimaging data by the corresponding, randomly



**Figure 3. Determining Whether Cross-component Correlations in the Behavioral Factor Analysis Are Accounted for by the Tasks Recruiting Multiple Independent Functional Brain Networks**

A cognitive task can measure a combination of noise, task-specific components, and components that are general, contributing to the performance of multiple tasks. In the current study, there were three first-order components: reasoning, short-term memory (STM), and verbal processing. In classical intelligence testing, the first-order components are invariably correlated positively when allowed to rotate into oblique orientations. A factor analysis of these correlations may be undertaken to estimate a second-order component and this is generally denoted as “g.” “g” may be generated from distinct sources: task mixing, the tendency for tasks to corecruit multiple systems, and diffuse factors that contribute to the capacities of all of those systems. When simulations were built based on the brain imaging data, the correlations between the first-order components from the behavioral study were entirely accounted for by tasks corecruiting multiple functional networks.

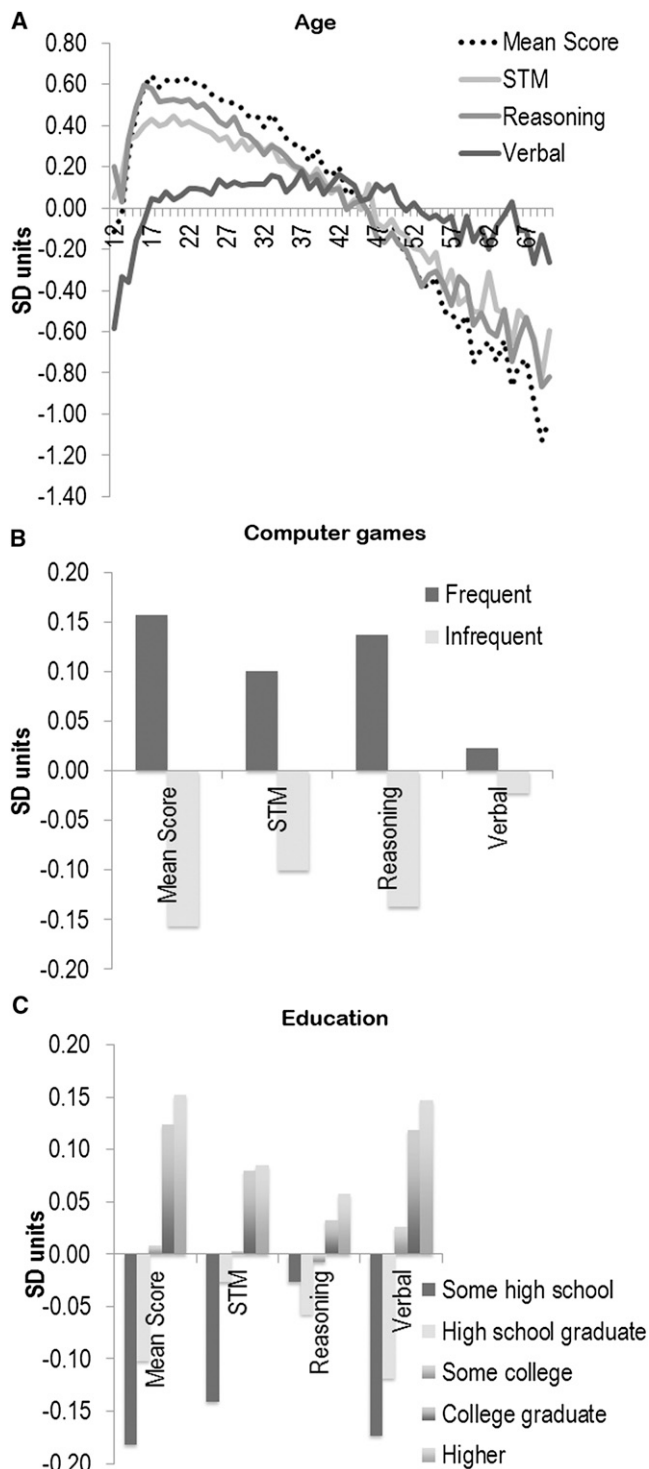
generated, factor score and summing the resultant values. The scores were then standardized for each task and noise was added by adding the product of randomly generated Gaussian noise, the test-retest reliabilities (Table S2), and a noise level constant. A series of iterative steps were then taken, in which the noise level constant was adjusted until the summed communalities from the simulated and behavioral PCA solutions were closely matched in order to ensure that the same total amount of variance was explained by the first-order components. This process was repeated 20 times to generate a standard deviation. (Note that matching the total variance explained by the first-order components in this manner does not bias the result; for example, if each task loaded on just one first-order component, then the first-order components would not be correlated.)

The results revealed a significant conformity (Table S4) between the task-to-component loadings from the PCA models of simulated data and the Internet behavioral data (simulated to real correlations: 2F model STM  $r = 0.56$ ,  $p < 0.05$  and reasoning  $r = 0.74$ ,  $p < 0.005$ ; 3F model STM  $r = 0.64$ ,  $p < 0.05$ , reasoning  $r = 0.77$ ,  $p < 0.005$ , and verbal  $r = 0.53$ ,  $p < 0.05$ ). More importantly, the size of the correlations between the obliquely oriented first-order components derived from the PCA of Internet data

and data simulated based on task-functional network activation levels were almost identical for the 2F model (MDr-MDwm real  $r = 0.47$ , simulated  $r = 0.46$ ,  $SD \pm 0.01$ ) and highly similar for the 3F model (Figure 3) despite the underlying factors in the simulated data set being completely independent. Consequently, there was little requirement for a diffuse higher-order “g” factor once the tendency for tasks to corecruit multiple functional brain networks was accounted for.

#### Dissociating Behavioral Components across Biological and Demographic Variables

These results suggest that the cognitive systems that underlay the STM, reasoning, and verbal components should have largely independent capacities. We sought to confirm this prediction by examining the correlations between the behavioral components (STM, reasoning, and verbal) and questionnaire variables that have previously been associated with general intelligence. An in-depth discussion of the relationship between biological or demographic variables and components of intelligence is outside the scope of the current article and will be covered elsewhere. Here, these correlations were used to leverage dissociations, and the question of whether they are mediated

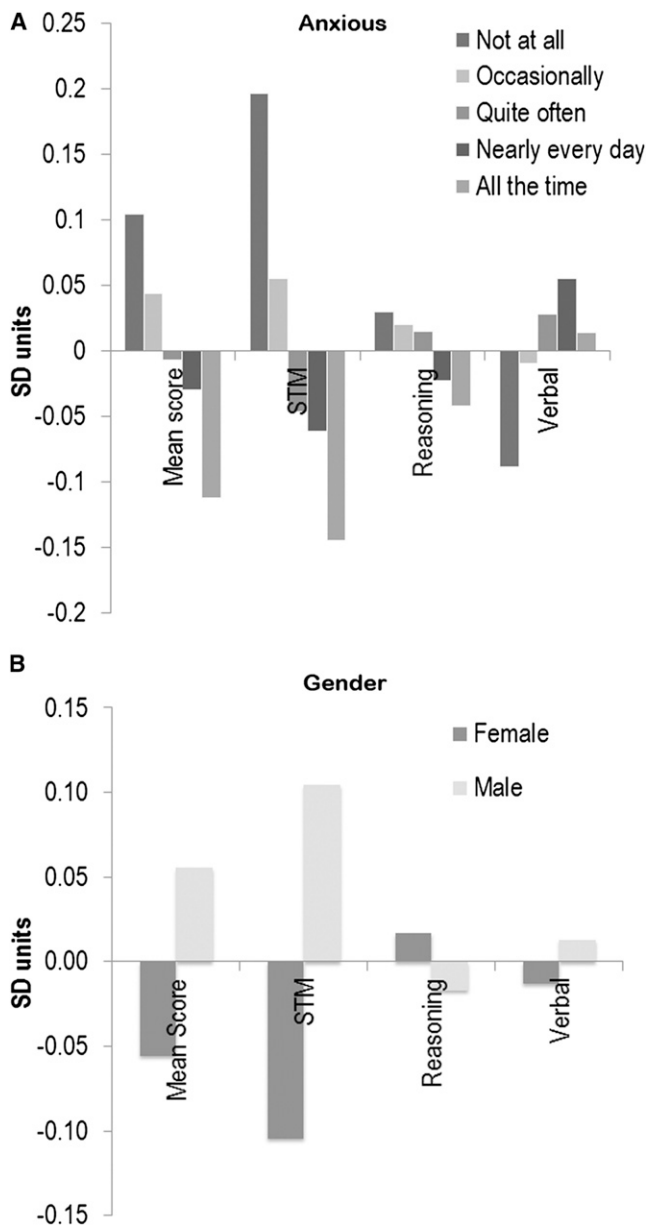


**Figure 4. The Relationship of Behavioral Components to Age, Education, and Frequency of Computer Games**

The verbal component was less correlated than the STM and reasoning components with age and frequency with which individuals played computer games but was more correlated with education level.

by unmeasured biological or demographic variables is not relevant. The extents to which the questionnaire responses predicted individual mean and component scores were estimated using generalized linear models. In such a large population sample, almost all effects are statistically significant because uncertainty regarding the proximity of sample means to population means approaches zero. Consequently, the true measure of significance is effect size, and here we conformed to Cohen's notion (Cohen, 1988) that an effect of  $\sim 0.2$  SD units represents a small effect,  $\sim 0.5$  a medium effect, and  $\sim 0.8$  a large effect. The STM, reasoning, and verbal component scores were highly dissociable in terms of their correlations with questionnaire variables. Age was by far the most significant predictor of performance, with the mean scores of individuals in their sixties  $\sim 1.7$  SD below those in their early twenties (Figure 4A). (Note that in intelligence testing, 1 SD is equivalent to 15 IQ points.) The verbal component scores showed a relatively late peak and subtle age-related decline relative to the other two components. In this respect, the STM and reasoning components can be considered dissociated from the verbal component in terms of their sensitivity to aging. Similarly, the mean score and the STM and reasoning component scores showed small-medium positive relationships with the frequency with which individuals played computer games ( $\sim 0.32$  SD,  $\sim 0.2$  SD, and  $\sim 0.3$  SD, respectively) (Figure 4B), whereas the relationship with the verbal component was negligible. Conversely, while level of education (calculated from those aged 20+) showed a small-medium-sized positive relationship with the mean score ( $\sim 0.33$ ) and the verbal score (0.32 SD), the STM score showed a smaller relationship (0.23 SD), while the relationship with reasoning (0.12 SD) was of negligible scale (Figure 4C). The STM and reasoning components were also dissociated from each other. For example, individuals who regularly suffer from anxiety (Figure 5A) had significantly lower mean scores (0.21 SDs), a relationship that was most pronounced for the STM component (0.35 SDs), with negligible reasoning (0.06 SDs) and verbal ( $-0.16$  SDs) effect sizes. Similarly, while the differences between male and female participants' mean (0.1 SD), verbal (0.03), and reasoning scores ( $-0.03$ ) were negligible, males showed a small advantage over females on the STM component score (0.2 SD) (Figure 5B). Other significant factors included amount smoked (Figure 6A), with smokers performing worse than nonsmokers on the mean score ( $\sim 0.19$  SD units), a difference that was most pronounced for the STM component (STM  $\approx 0.19$  SD, reasoning  $\approx 0.09$  SD, and verbal  $\approx 0.05$  SD). By contrast, alcohol consumption and caffeine intake showed negligible effect sizes for mean and component scores. Finally, geographical origin (grouped by country of birth) showed small-medium-sized relationships with a mean score (0.37 SD) that primarily favored individuals from countries in which English is the first language (Figure 6B). The largest relationship between component score and geographical origin was for the verbal component, which spanned  $\sim 0.52$  SD units, with smaller relationships evident for the reasoning (0.40 SD) and STM (0.23 SD) scores. (Note that rerunning the behavioral PCA and including only individuals for whom English was the first language produced the same three-component solution.) Taken together, this combination of co-relationship and dissociation of the STM, reasoning, and





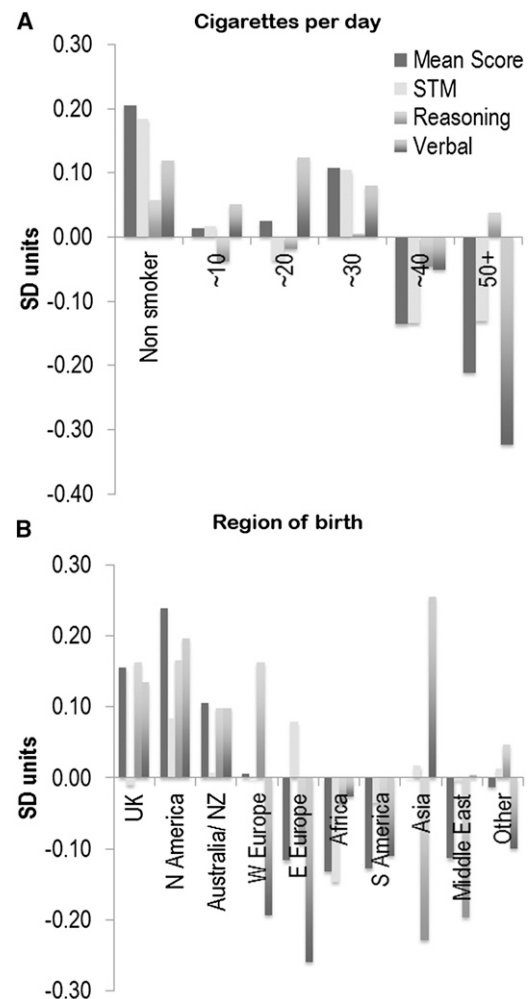
**Figure 5. The Relationship of Behavioral Components to Anxiety and Gender**

The STM component was correlated with self-reported frequency of anxiety and with gender, whereas the reasoning component was not.

verbal scores supports the view that these components have a basis in relatively independent systems, while demonstrating how a multifactor model can provide a more informative and balanced account of population differences in intelligence.

#### Behavioral Pilot: Comparing the Three Behavioral Components to the “g” Factor

Data from a pilot study were examined in order to confirm that the cognitive battery generated scores that correlated with “g” as measured by classic IQ testing. Thirty-five young healthy



**Figure 6. The Relationship of Behavioral Components to Amount Smoked and Country of Birth**

The relationship between amount smoked and performance was of significant scale for the STM component score. Region of birth was significantly related to all three component scores, with the greatest correlation being for the verbal component.

right-handed participants undertook the 12 cognitive tasks under controlled laboratory conditions followed by one of the most commonly applied classic pen and paper IQ tests—the Cattell Culture Fair (scale II). Scores were standardized so that each of the cognitive tasks had zero mean and unit deviation across participants. For each participant, the standardized scores were then averaged across the tasks. A significant bivariate correlation was evident between the mean standardized scores and performance on the Cattell Culture Fair intelligence test ( $r = 0.65$ ,  $p < 0.001$ ). Component scores were calculated for the 35 pilot participants using regression with the test-component loadings from the orthogonal PCA of the Internet cohort’s data. Both the STM and the reasoning component scores correlated significantly with the Cattell Culture Fair score, whereas the verbal component showed a positive subthreshold trend (STM  $r = 0.52$ ,  $p < 0.001$ ; reasoning  $r = 0.34$ ,  $p < 0.05$ ; verbal

$r = 0.26$ ,  $p = 0.07$ ). Numerically, the strongest correlation was generated by averaging the STM and reasoning component scores (STM and reasoning  $r = 0.65$ ,  $p < 0.001$ ; STM and verbal  $r = 0.54$ ,  $p < 0.001$ ; verbal and reasoning  $r = 0.377$ ,  $p < 0.05$ ). When second-order component scores were generated for the pilot participants using the obliquely oriented factor model from the Internet cohort, they also correlated significantly with Cattell Culture Fair score ( $r = 0.64$ ,  $p < 0.001$ ). These results suggest that the STM and reasoning components relate more closely than the verbal component to “g” as defined by classic IQ testing.

### General Discussion

The results presented here provide evidence to support the view that human intelligence is not unitary but, rather, is formed from multiple cognitive components. These components reflect the way in which the brain regions that have previously been implicated in intelligence are organized into functionally specialized networks and, moreover, when the tendency for cognitive tasks to recruit a combination of these functional networks is accounted for, there is little evidence for a higher-order intelligence factor. Further evidence for the relative independence of these components may be drawn from the fact that they correlate with questionnaire variables in a dissociable manner. Taken together, it is reasonable to conclude that human intelligence is most parsimoniously conceived of as an emergent property of multiple specialized brain systems, each of which has its own capacity.

Historically, research into the biological basis of intelligence has been limited by a circular logic regarding the definition of what exactly intelligence is. More specifically, general intelligence may sensibly be defined as the factor or factors that contribute to an individual's ability to perform across a broad range of cognitive tasks. In practice, however, intelligence is typically defined as “g,” which in turn is defined as the measure taken by classical pen and paper IQ tests such as Raven's matrices (Raven, 1938) or the Cattell Culture Fair (Cattell, 1949). If a more diverse set of paradigms are applied and, as a consequence, a more diverse set of first-order components are derived, the conventional approach is to run a second-order factor analysis in order to generate a higher-order component. In order for the battery to be considered a good measure of general intelligence, this higher-order component should correlate with “g” as measured by a classical IQ test. The results presented here suggest that such higher-order constructs should be used with caution. On the one hand, a higher-order component may be used to generate a more interpretable first-order factor solution, for example, when cognitive tasks load heavily on multiple components. On the other hand, the basis of the higher-order component is ambiguous and may be accounted for by cognitive tasks corecruiting multiple functionally dissociable brain networks. Consequently, to interpret a higher-order component as representing a dominant unitary factor is misleading.

Nonetheless, one potential objection to the results of the current study could be that while the 12 tasks load on common behavioral components, by the most commonly applied definition, these components do not relate to general intelligence unless they generate a second-order component that correlates

with “g.” From this perspective, only the higher-order component may truly be considered intelligence, with the first-order components being task specific. In the current study, this objection is implausible for several reasons. First, a cognitive factor that does not relate to such general processes as planning, reasoning, attention, and short-term memory would, by any sensible definition, be a very poor candidate for general intelligence. Furthermore, many of the tasks applied here were based on paradigms that either have been previously associated with general intelligence or form part of classical intelligence testing batteries. In line with this view, analysis of data from our pilot study shows that when a second-order component is generated, it correlates significantly with “g,” and yet, based on the imaging data, that higher-order component is greatly reduced, as it may primarily be accounted for by tasks corecruiting multiple functionally dissociable brain networks. Moreover, MD cortex, which is both active during and necessary for the performance of classic intelligence tests, was highly activated during the performance of this cognitive battery but was divided into two functional networks. Thus, the tasks applied here both recruited and functionally fractionated the previously identified neural correlates of “g.” It should also be noted that this battery of tasks is, if anything, more diverse than those applied in classical IQ tests and, in that respect, may be considered at least as able to capture general components that contribute to a wide range of tasks. For example, Raven's matrices (Raven, 1938) employ variants on one class of abstract reasoning problem, the Cattell uses just four types of problem, while the WAIS-R (Wechsler, 1981) employs 11 subtests. Thus, it is clearly the case that by either definition, the tasks applied here are related to general intelligence.

Another potential objection is that the functional brain networks may not have been defined accurately enough because they form clearly defined clusters and, therefore, are negatively correlated across space. Perhaps the ICA underestimated this spatial segregation, causing voxels from one network to distort the task-component loadings from the other and masking the contribution of a diffuse higher-order “g” factor. This objection is highly unlikely for several reasons. First, while ICA seeks to maximize independence, it does not necessarily derive completely independent components. For example, in the current study, the MDwm and MDr components did show the expected negative correlation across voxels ( $r = -0.19$ ). Second, such a close conformity between the second-order correlations from the simulated and behavioral models would have been highly unlikely to occur by chance alone if the ICA had failed. Furthermore, if the networks are spatially separable, then it should be possible to take relatively unmixed measures of their task-related activations by examining the centers of each cluster, where there is minimal network overlap. For example, when mean task activation levels were extracted from 5 mm spherical ROIs centered on peak IFO and IFS coordinates within the MDwm and MDr networks bilaterally, a marked double dissociation was evident across tasks. Specifically, there was either strong coactivation of regions or strong activation in one region and virtually no activation in the other dependent on the task context (Table S5). This is clearly the pattern of results that would be expected if the ROIs were placed exclusively within

functionally dissociable and spatially separable networks. Nonetheless, when the 2F simulations were rerun based on these IFS and IFO activation levels, the second-order correlation between the estimated oblique components was not diminished but, rather, formed a precise match to the Internet behavioral data ( $r = 0.47$ ,  $SD \pm 0.02$ ). Thus, while the contribution of diffuse factors should not be entirely discounted, the results accord particularly closely with the view that the higher-order “g” component is primarily accounted for by cognitive tasks recruiting multiple functionally dissociable brain networks.

Indeed, from a phenomenological perspective, the idea that tasks tend to corecruit multiple functional brain networks makes intuitive sense, as generating a task that depends on any single cognitive process is likely to be rather intractable. Consider a simple working memory task, in which the spatial locations of a sequence of flashes must be observed, maintained, and repeated (spatial span). Even in this simple context, the participant must comprehend the written instructions, otherwise, they may report the correct locations but in the incorrect sequence. More importantly, people often apply chunking strategies when encoding information in short-term memory in order to generate a more efficient memory trace. For example, they may note that the flashes form the outline of a geometric shape. Such “chunking” strategies are a form of logical transformation and are known to recruit the IFS (Bor et al., 2001). Thus, even in the most simple of task contexts, all three of the cognitive systems identified in the current study would play a role but to varying extents.

This interplay of processes raises an interesting point regarding what exactly is meant by the term “functional network.” No doubt, it is the case that the functional networks identified here often interact closely during the performance of complex cognitive tasks and, consequently, could be considered to form specialized subcomponents of a broader cognitive system. Indeed, from this perspective, the higher-order “g” factor that may be generated from hierarchical analysis of the behavioral data may be described as representing a higher-order functional network formed from the corecruitment of the MDwm and the MDr subnetworks. Such nested architecture is likely to form an accurate description of the functional organization of the brain (Bullmore and Sporns, 2009). Nonetheless, activity across the MDwm and MDr brain regions was not positively correlated (Table S5). More importantly, the combination of corecruitment and strong double dissociation across task contexts is in close concordance with the proposed criteria for qualitatively dissociable brain systems (Henson, 2006). Furthermore, the fractionation of MD subregions reported here is highly replicable and, consequently, is unlikely to be specific to the choice of tasks. For example, similar functional networks have recently been reported when spontaneous fluctuations in resting-state activity are analyzed using ICA and graph theory (Dosenbach et al., 2008). More importantly, the conformity between the behavioral and imaging factor solutions supports the view that they make independent contributions to cognitive ability. In further support of this view, previous studies have demonstrated that functional activation within the IFO/preSMA and IFS/IPC and their associated cognitive processes are differentially affected by neurological disorders, pharmacological

interventions, and genotype (Hampshire and Owen, 2010). Thus, the MDr and MDwm networks are also dissociable with respect to their sensitivity to biological factors that modulate individual differences in cognition.

One of the reviewers of this paper suggested that an additional “g” network might exist within MD but would only be recruited at the highest levels of demand. Perhaps activation when performing at lower levels of demand could mask this unitary high-load network? This interpretation is unlikely, as the tasks were specifically designed to be taxing. More specifically, they used a combination of speeded/response-driven designs and dynamically adapting difficulty algorithms that kept participants working at a high cognitive load, yet only 10% of the cross-task variance within MD cortex remained unexplained by the two-component model. Moreover, the subdivision of MD into functionally specialized networks accords particularly well with results from previous studies that have systematically varied difficulty within task by manipulating specific cognitive demands. For example, when the number of concurrent rules was manipulated in a challenging nonverbal reasoning task, there was a disproportionate increase in the response of the IFS (Hampshire et al., 2011). Conversely, when the difficulty of a target-distractor decision was manipulated in a task that required morphed stimuli to be compared with maintained target objects, there was a disproportionate increase in the response of the IFO (Hampshire et al., 2008). Cross-study comparisons of this type may be more precisely quantified using factor analysis. When brain maps depicting difficulty effects from these previous studies were added as extra columns in the PCA of task-related activations, the rule complexity manipulation loaded selectively on the MDr network ( $MDr = 0.79$ ,  $MDwm = 0.06$ ), whereas the object discrimination manipulation loaded selectively on the MDwm network ( $MDr = 0.18$ ,  $MDwm = 0.64$ ). Thus, when specific cognitive demands are systematically varied, MD cortex fractionates into the same two functional networks.

This latter analysis highlights a salient issue within the current literature on frontoparietal function. There are a great many process-specific models that do not explicitly account for the broader involvement of MD cortex in cognition. A major challenge when interpreting this literature is how to group cognitive processes and functional activations that are reported in isolation into those that are alike, thereby producing a more manageable set of cognitive entities. To this end, the STM, reasoning, and verbal components may provide a sensible starting point, as they bridge between classical and contemporary models from the cognitive psychology, intelligence, and neuroimaging literatures. For example, the association of the STM and reasoning components with subregions of MD cortex (Duncan et al., 2000; Woolgar et al., 2010) suggests that they relate more closely to the general intelligence construct “g” than the verbal component. Results from the behavioral pilot study provide tentative evidence for this, as both STM and reasoning component scores were significantly correlated with IQ, but the verbal component was not. A stronger confirmation of this relationship in a larger population sample would form the basis of a sensible future study. In terms of functional localization, the observed dissociation between the MDwm and MDr networks accords closely with the growing evidence for a

ventral-dorsal functional axis within frontoparietal cortex. In the context of working memory, similar dissociations have been reported during the maintenance of information in mind versus the reorganization or transformation of that information (Bor et al., 2001; Owen et al., 1996; Petrides, 2005). However, in addition to the ventral activation reported in those studies, the most superior portion of the IFS ROI was also associated with short-term memory here, a result that accords particularly well with results from studies of spatial working memory (Courtney et al., 1998). More broadly, the MDwm network closely resembles the pattern of activation observed during other simple executive processes including target detection (Hampshire et al., 2009), attentional switching (Hampshire and Owen, 2006), and response inhibition (Aron et al., 2004). On a process level, we believe that the common requirement in tasks that recruit the MDwm network is the need to focus on and maintain task-relevant information. Previously, we have suggested that the IFO uses a relatively simple mechanism to support such processes, rapidly adapting to represent those items, for example, expected stimuli and planned responses that form the basis of the task that the individual is currently focused on (Hampshire et al., 2010). This representation would form the source of a top-down signal that biases processing within posterior brain systems such as category-sensitive visual processing areas (Desimone and Duncan, 1995). From this perspective, short-term memory, focused attention, and response control are facets of the same cognitive system. A testable prediction of this hypothesis is that simple attentional tasks will not only preferentially recruit the MDwm network, they will also load heavily on the STM component in terms of performance.

It is particularly interesting that the mental transformation of spatial, object, and verbal information shares a common resource within a network of brain regions that includes the IFS. Previous neuroimaging studies that have focused on varying demands within any one of these domains accord well with this finding. For example, dorsolateral prefrontal cortex activation is evident during spatial planning (Williams-Gray et al., 2007) and deductive reasoning (Hampshire et al., 2011). The results here confirm this relationship in a more direct manner as the planning, rotations, deductive reasoning, and verbal reasoning tasks all loaded heavily on the same component in both the behavioral and the neuroimaging analyses. Thus, on a process level, it seems sensible to conclude that the MDr network forms a module that is specialized for the transformation of information in mind according to logical rules but that is insensitive to the type or source of information that is transformed. This view is compatible with the idea that the IFS is recruited during more complex executive processes (Petrides, 2005) and accords well with a two-stage model of working memory that assumes that dorsolateral frontal lobe regions are recruited when information is reordered in mind (Owen et al., 1996). A major challenge for future studies will be to determine the neural mechanism by which the MDr network supports such diverse logical processes.

The observation of a distinct verbal factor accords particularly well with Cattell's hypothesis that intelligence has a distinct "crystallized" component, which is dependent on the skills and information that an individual acquires with experience (Cattell, 1949; Cattell and Horn, 1978; Vernon, 1964, 1965). More specif-

ically, in the current study, the verbal factor bears many of the hallmarks of crystallized intelligence, being later to peak and decline with age and being more correlated with education level than the STM and reasoning factors. The fact that this component is closely related to the verbal domain is a well documented, but controversial, characteristic of crystallized intelligence and highlights the ongoing debate over whether it represents the amount of information a person has absorbed as proposed by Cattell or the processing of information within the verbal domain (Cattell, 1943; Vernon, 1964, 1965). With respect to this latter question, the brain imaging data may offer some clues. The left inferior frontal gyrus showed increased activation during tests that loaded heavily on the verbal factor. This region plays a role in the selection, retrieval, and maintenance of semantic information (Wagner et al., 2001) and in the production and comprehension of verbal information (Dronkers et al., 2007; Just et al., 1996; Rogalsky and Hickok, 2011). Thus, it may be the case that crystallized intelligence is correlated with both types of process, as to some extent they share a common resource within the frontal lobes. Here, the left inferior frontal gyrus was recruited in conjunction with the posterior temporal lobes bilaterally. Based on the prior literature, it seems reasonable to suggest that this network of frontal and temporal brain regions supports a mechanism that is common to both verbal and semantic domains, the selective retrieval and maintenance (Rogalsky and Hickok, 2011) of learnt information. Interestingly, this same frontal lobe region has recently been implicated in one of the most abstract forms of human intelligence, analogical reasoning (Hampshire et al., 2011), in which distal associations are used to transfer abstract rules between problem contexts that differ at the concrete level. This most abstract of reasoning processes was not assessed in the current study, and a testable prediction is that the ability to cope with increased analogical demand may be correlated with the verbal component score.

Is it possible that other factors contribute to general task performance? In our opinion, this is most likely the case, as there are many functional networks in the brain. For example, the ability to adapt plans based on rewarding or punishing outcomes is critical for optimally adaptive behavior and is known to depend on neural circuitry including the orbitofrontal cortices (Hampshire and Owen, 2006; Kringelbach, 2005; O'Doherty et al., 2001). This type of executive process was not directly measured in the current study. Such processes may be distinct from what we typically consider to be general intelligence as defined by classical IQ testing, but they seem sensible inclusions in a multiple component model of intelligent behavior. Nonetheless, the three factors identified here reliably explain a large proportion of the variability in performance on a broad range of the types of task that would typically be considered akin to general intelligence. They also functionally fractionate the set of brain regions that are most commonly recruited across diverse task contexts and that are most closely associated with "g." Furthermore, the division of tests between the three factors observed here is comprehensible from the perspective of influential models from both the cognitive psychology and functional neuroimaging literatures. Thus, these results provide strong evidence that human intelligence is a construct that emerges from the functioning of anatomically dissociable brain networks. When one considers



the high degree of variability in the correlations between the questionnaire factors that have previously been associated with “g” and the three component scores measured here, it seems reasonable to suggest that intelligence is most informatively quantified in terms of not one but multiple distinct abilities. Future research should focus on whether individual differences in component score can be related to individual differences in the function or anatomy of the MDwm, MDr, and verbal networks, with an emphasis on whether candidate genotypes mediate such differences, which functional networks and cognitive components are affected by neural assault or cognitive decline, and the extents to which these components relate to other popular measures of higher cognitive function including inhibitory control, attentional switching, and analogical reasoning.

### EXPERIMENTAL PROCEDURES

The 12 cognitive tasks are described in detail in the [Supplemental Experimental Procedures](#) and are available for evaluation at <http://www.cambridgebrainsciences.com>. They were designed, based on well-established paradigms from the cognitive neuroscience literature, to measure planning, reasoning, attention, and working memory abilities. In the behavioral study, the entire battery of tasks took approximately 30 min to complete, with each task calculating one outcome measure. In the fMRI study, the tasks were identical to the behavioral versions except that functions for displaying correct and incorrect feedback were disabled to avoid confounding effects of variable error processing. The fMRI tasks were run in three 60 s blocks with 16 s periods of rest, allowing activation during performance of the tasks to be calculated relative to a resting baseline in the most statistically efficient manner (Donaldson and Bucknar, 2001). In the imaging study, participants practiced by undertaking the entire battery of Internet tasks once prior to entering the scanner. Behavioral data were collected via the Internet between September and December 2010. The experiment URL was originally advertised in a *New Scientist* feature (Owen and Highfield, 2010), on the Discovery Channel web site, in the *Daily Telegraph*, and on social networking web sites including Facebook and Twitter. Subsequently, the URL proliferated via blogs and social networks, with Google finding links to the trial URL on ~3,000 web pages at the time of submission. The 12 tasks were presented in a fixed order (note, the behavioral components were unrelated to the task order) and on completion of the trial participants filled out a demographic questionnaire. Subsequently, they received a report showing their scores relative to the previously calculated normative data and were directed to a second web site, where they were informed they could retake the tests and compare scores with friends on Facebook. Details of the imaging and behavioral analyses are included in the [Supplemental Experimental Procedures](#).

### SUPPLEMENTAL INFORMATION

Supplemental Information includes five tables and Supplemental Experimental Procedures and can be found with this article online at <http://dx.doi.org/10.1016/j.neuron.2012.06.022>.

### ACKNOWLEDGMENTS

The authors would like to thank the participants of this study, without whose overwhelming response this research would not have been possible and Andrew Smith at Lucidity for keeping the web site running. We would like to thank Kevin Symonds at the MRC-CBU for fielding technical questions, Adam McLean at UWO for helping to run the fMRI tasks, and John Duncan for providing the MD ROIs and invaluable feedback. R.R.H. was the editor of the *New Scientist* when this study was conducted. This research was funded by MRC grant U1055.01.002.00001.01 and the Canada Excellence Research Chair Program.

Accepted: June 4, 2012

Published: December 19, 2012

### REFERENCES

- Aron, A.R., Robbins, T.W., and Poldrack, R.A. (2004). Inhibition and the right inferior frontal cortex. *Trends Cogn. Sci.* 8, 170–177.
- Bor, D., Duncan, J., and Owen, A.M. (2001). The role of spatial configuration in tests of working memory explored with functional neuroimaging. *Scand. J. Psychol.* 42, 217–224.
- Bullmore, E., and Sporns, O. (2009). Complex brain networks: graph theoretical analysis of structural and functional systems. *Nat. Rev. Neurosci.* 10, 186–198.
- Burt, C. (1959). Class differences in general intelligence: III. *Br. J. Stat. Psychol.* 12, 15–33.
- Burt, C. (1961). Intelligence and social mobility. *Br. J. Stat. Psychol.* 14, 2–24.
- Carroll, J.B. (1993). *Human Cognitive Abilities: A Survey of Factor-Analytic Studies* (Cambridge: Cambridge University Press).
- Cattell, R.B. (1943). The measurement of adult intelligence. *Psychol. Bull.* 40, 153–193.
- Cattell, R.B. (1949). *Culture Free Intelligence Test, Scale 1, Handbook* (Champaign, IL: Institute of Personality and Ability).
- Cattell, R.B., and Horn, J.L. (1978). A check on the theory of fluid and crystallized intelligence with descriptions of new subtest designs. *Journal of Educational Measurement* 15, 139–164.
- Cohen, J. (1988). *Statistical Power Analysis for the Behavioral Sciences*, Second Edition (Hillsdale, NJ: Lawrence Erlbaum Associates).
- Corbetta, M., and Shulman, G.L. (2002). Control of goal-directed and stimulus-driven attention in the brain. *Nat. Rev. Neurosci.* 3, 201–215.
- Courtney, S.M., Petit, L., Maisog, J.M., Ungerleider, L.G., and Haxby, J.V. (1998). An area specialized for spatial working memory in human frontal cortex. *Science* 279, 1347–1351.
- D’Esposito, M., Postle, B.R., Ballard, D., and Lease, J. (1999). Maintenance versus manipulation of information held in working memory: an event-related fMRI study. *Brain Cogn.* 41, 66–86.
- Desimone, R., and Duncan, J. (1995). Neural mechanisms of selective visual attention. *Annu. Rev. Neurosci.* 18, 193–222.
- Donaldson, D., and Bucknar, R. (2001). Effective paradigm design. In *Functional MRI: An Introduction to Methods*, P. Jefferies, P.M. Matthews, and S.M. Smith, eds. (New York: Oxford University Press), pp. 177–195.
- Dosenbach, N.U., Fair, D.A., Cohen, A.L., Schlaggar, B.L., and Petersen, S.E. (2008). A dual-networks architecture of top-down control. *Trends Cogn. Sci.* 12, 99–105.
- Dronkers, N.F., Plaisant, O., Iba-Zizen, M.T., and Cabanis, E.A. (2007). Paul Broca’s historic cases: high resolution MR imaging of the brains of Leborgne and Lelong. *Brain* 130, 1432–1441.
- Duncan, J. (2005). Prefrontal cortex and Spearman’s g. In *Measuring the Mind: Speed, Control, and Age*, J. Duncan, L.H. Phillips, and P. McLeod, eds. (Oxford: Oxford University Press), pp. 249–272.
- Duncan, J., and Owen, A.M. (2000). Common regions of the human frontal lobe recruited by diverse cognitive demands. *Trends Neurosci.* 23, 475–483.
- Duncan, J., Seitz, R.J., Kolodny, J., Bor, D., Herzog, H., Ahmed, A., Newell, F.N., and Emslie, H. (2000). A neural basis for general intelligence. *Science* 289, 457–460.
- Gould, S.J. (1981). *The Mismeasure of Man* (New York: Norton).
- Gray, J.R., Chabris, C.F., and Braver, T.S. (2003). Neural mechanisms of general fluid intelligence. *Nat. Neurosci.* 6, 316–322.
- Hampshire, A., and Owen, A.M. (2006). Fractionating attentional control using event-related fMRI. *Cereb. Cortex* 16, 1679–1689.
- Hampshire, A., and Owen, A.M. (2010). Clinical studies of attention and learning. In *Attention and Associative Learning*, C.J. Mitchell and M.E. Le Pelley, eds. (Oxford: Oxford University Press), pp. 385–406.

- Hampshire, A., Thompson, R., Duncan, J., and Owen, A.M. (2008). The target selective neural response—similarity, ambiguity, and learning effects. *PLoS ONE* 3, e2520.
- Hampshire, A., Thompson, R., Duncan, J., and Owen, A.M. (2009). Selective tuning of the right inferior frontal gyrus during target detection. *Cogn. Affect. Behav. Neurosci.* 9, 103–112.
- Hampshire, A., Chamberlain, S.R., Monti, M.M., Duncan, J., and Owen, A.M. (2010). The role of the right inferior frontal gyrus: inhibition and attentional control. *Neuroimage* 50, 1313–1319.
- Hampshire, A., Thompson, R., Duncan, J., and Owen, A.M. (2011). Lateral prefrontal cortex subregions make dissociable contributions during fluid reasoning. *Cereb. Cortex* 21, 1–10.
- Henson, R. (2006). Forward inference using functional neuroimaging: dissociations versus associations. *Trends Cogn. Sci.* 10, 64–69.
- Horn, J.L., and Cattell, R.B. (1966). Refinement and test of the theory of fluid and crystallized general intelligences. *J. Educ. Psychol.* 57, 253–270.
- Irwing, P., and Lynn, R. (2005). Sex differences in means and variability on the progressive matrices in university students: a meta-analysis. *Br. J. Psychol.* 96, 505–524.
- Johnson, W., and Bouchard, T.J. (2005). The structure of human intelligence: It is verbal, perceptual, and image rotation (VPR), not fluid and crystallized. *Intelligence* 33, 393–416.
- Jung, R.E., and Haier, R.J. (2007). The parieto-frontal integration theory (P-FIT) of intelligence: converging neuroimaging evidence. *Behav. Brain Sci.* 30, 135–154, discussion 154–187.
- Just, M.A., Carpenter, P.A., Keller, T.A., Eddy, W.F., and Thulborn, K.R. (1996). Brain activation modulated by sentence comprehension. *Science* 274, 114–116.
- Koechlin, E., Ody, C., and Kouneiher, F. (2003). The architecture of cognitive control in the human prefrontal cortex. *Science* 302, 1181–1185.
- Kringelbach, M.L. (2005). The human orbitofrontal cortex: linking reward to hedonic experience. *Nat. Rev. Neurosci.* 6, 691–702.
- Lynn, J. (1999). The effect of race and sex on physicians' recommendations for cardiac catheterization. *J. Am. Geriatr. Soc.* 47, 1390.
- Mackintosh, N.J. (1998). *IQ and Human Intelligence* (Oxford: Oxford University Press).
- McManus, I.C. (2004). Measuring participation in UK medical schools: social class data are problematic to interpret. *BMJ* 329, 800–801, author reply 801.
- O'Doherty, J., Kringelbach, M.L., Rolls, E.T., Hornak, J., and Andrews, C. (2001). Abstract reward and punishment representations in the human orbitofrontal cortex. *Nat. Neurosci.* 4, 95–102.
- Owen, A.M., and Highfield, R. (2010). The twelve pillars of wisdom. *New Scientist* 2784, 38–39.
- Owen, A.M., Evans, A.C., and Petrides, M. (1996). Evidence for a two-stage model of spatial working memory processing within the lateral frontal cortex: a positron emission tomography study. *Cereb. Cortex* 6, 31–38.
- Petrides, M. (2005). Lateral prefrontal cortex: architectonic and functional organization. *Philos. Trans. R. Soc. Lond. B Biol. Sci.* 360, 781–795.
- Raven, J.C. (1938). *Progressive Matrices: A Perceptual Test of Intelligence* (London: H.K. Lewis).
- Rogalsky, C., and Hickok, G. (2011). The role of Broca's area in sentence comprehension. *J. Cogn. Neurosci.* 23, 1664–1680.
- Rushton, J.P., and Jensen, A.R. (2005). Thirty years of research on race differences in cognitive ability. *Psychology, Public Policy, and Law* 11, 235–294.
- Spearman, C. (1904). "General intelligence" objectively determined and measured. *Am. J. Psychol.* 15, 201–293.
- Stone, J.V., and Porrill, J. (1999). Regularisation using spatiotemporal independence and predictability. *Computational Neuroscience Report* 201. <http://citeseerx.ist.psu.edu/viewdoc/download?doi=10.1.1.45.7701&rep=rep1&type=pdf>.
- Vernon, P.E. (1964). *The Structure of Human Abilities* (London: Methuen).
- Vernon, P.E. (1965). Ability factors and environmental influences. *Am. Psychol.* 20, 723–733.
- Wagner, A.D., Paré-Blagoev, E.J., Clark, J., and Poldrack, R.A. (2001). Recovering meaning: left prefrontal cortex guides controlled semantic retrieval. *Neuron* 31, 329–338.
- Weschler, D. (1981). *Wechsler Adult Intelligence Scale—Revised* (New York: The Psychological Corporation).
- Williams-Gray, C.H., Hampshire, A., Robbins, T.W., Owen, A.M., and Barker, R.A. (2007). Catechol O-methyltransferase Val158Met genotype influences frontoparietal activity during planning in patients with Parkinson's disease. *J. Neurosci.* 27, 4832–4838.
- Woolgar, A., Parr, A., Cusack, R., Thompson, R., Nimmo-Smith, I., Torralva, T., Roca, M., Antoun, N., Manes, F., and Duncan, J. (2010). Fluid intelligence loss linked to restricted regions of damage within frontal and parietal cortex. *Proc. Natl. Acad. Sci. USA* 107, 14899–14902.