

Portfolio

## Brickfield Newham

Brickfield Newham is a V&A Research Institute and V&A East collaboration in partnership with St. Austell's artist-led project Brickfield and University of East London's Performing Arts department. Supported by the Andrew W. Mellon Foundation, Newham Heritage Month and Arts Council England. The project was created by Georgia Haseldine (V&A), Rosanna Martin (Brickfield) and Lynne McCarthy (UEL).

Creator: Georgia Haseldine

Collaborators: Lynne McCarthy (Curator) and Rosanna Martin (Curator)



© Georgia Haseldine

- Map
- Summary
- Project framework
- Project narrative
- Research insights
- Further dissemination
- Supplementary material
- Metadata

### Summary

Brickfield Newham is a community research project that questions clay and its importance to the urban landscape by connecting people literally to the earth beneath their feet. Communities from across the borough are coming together to make bricks, build and fire a kiln on a construction site in the Royal Docks. They are investigating themes of dwelling, living and claiming the earth through performance and brickmaking. Rooted in Newham's history of industrialisation and habitation, Brickfield Newham will provide a hearth to share experiences of living in Newham and to listen to each person's vision of its future.



© Georgia Haseldine

### Website/online resource

<https://www.newhamheritagemonth.org/records/brickfield-newham/>

### Funding

Newham Heritage Month  
Andrew W. Mellon Foundation  
Arts Council England



© Georgia Haseldine

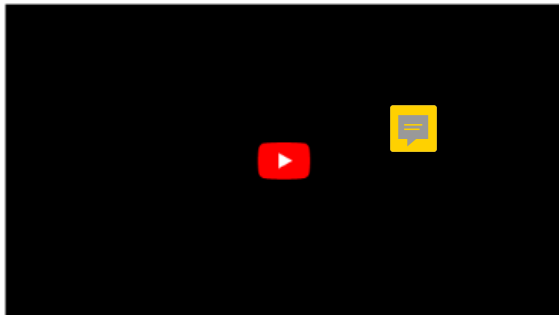
### Portfolio items

- 250 Fired Bricks
- About the project on Newham website
- Blog post: Brickfield Newham photo essay
- Brickfield Newham display
- Brickfield Newham Promotional Video
- Brickfield Newham: Hands-On Outdoor Brickmaking and Short Performance
- Newham Heritage Month Contributor Record: Brickfield Newham



© Sean Ebsworth

### Related videos



Kate Longworth discussing brickwork in Newham, May 2021 © Georgia Haseldine



© Georgia Haseldine

### Share this



Tweet



Email



Cite



© Georgia Haseldine



© Georgia Haseldine 2022. Licensed under CC BY 4.0 unported licence



THIS LICENCE INFORMATION IS GIVEN AS AN EXAMPLE ONLY AND DOES NOT APPLY TO THE ABOVE

Portfolio

## Brickfield Newham

Brickfield Newham is a V&A Research Institute and V&A East collaboration in partnership with St. Austell's artist-led project Brickfield and University of East London's Performing Arts department. Supported by the Andrew W. Mellon Foundation, Newham Heritage Month and Arts Council England. The project was created by Georgia Haseldine (V&A), Rosanna Martin (Brickfield) and Lynne McCarthy (UEL).

Creator: [Georgia Haseldine](#)

Collaborators: Lynne McCarthy (Curator) and Rosanna Martin (Curator)




© Georgia Haseldine

- Summary
- Project framework
- Project narrative
- Research insights
- Further dissemination**
- Supplementary material
- Metadata

## Further dissemination

### Participant created items:

 Newham Brickfield Project (June 2021): a take-home booklet designed by Annie Lye and Margot Drayson of the V&A/RCA History of Design MA Programme.

Brickfield Newham: Theatre Performances about Brick, Heritage and Living in Newham by UEL's MA students in Performing Arts.

Performances by BA, MA, PhD students



© Sean Ebsworth

### Events led by community groups:

Workshop: Volunteers visit Brickfield Newham and make bricks!



© Georgia Haseldine

### Articles and reviews

Newham Recorder: 'Humble' brick to be celebrated in Newham Heritage Month

### Works by others on Brickfield Newham

Blog post: A conversation about brick by Karen Nicholson, concerning Brickfield Newham.



© Sean Ebsworth



Newham Brickfield Project (June 2021): a take-home booklet designed by Annie Lye and Margot Drayson of the V&A/RCA History of Design MA Programme (Digital publication created by Annie Lye)