

The Repository is the CRIS, and the CRIS is the Repository

Jenny Evans, University of Westminster
evansje@westminster.ac.uk
@jennye

<https://westminsterresearch.westminster.ac.uk>

Repository/CRIS Workshop (II):
Practical Applications for Interoperability and/or Integration
Open Repositories 2019

About the University of Westminster

4 campuses centrally located
in and around the London
area

Over 19,000 students from
169 countries

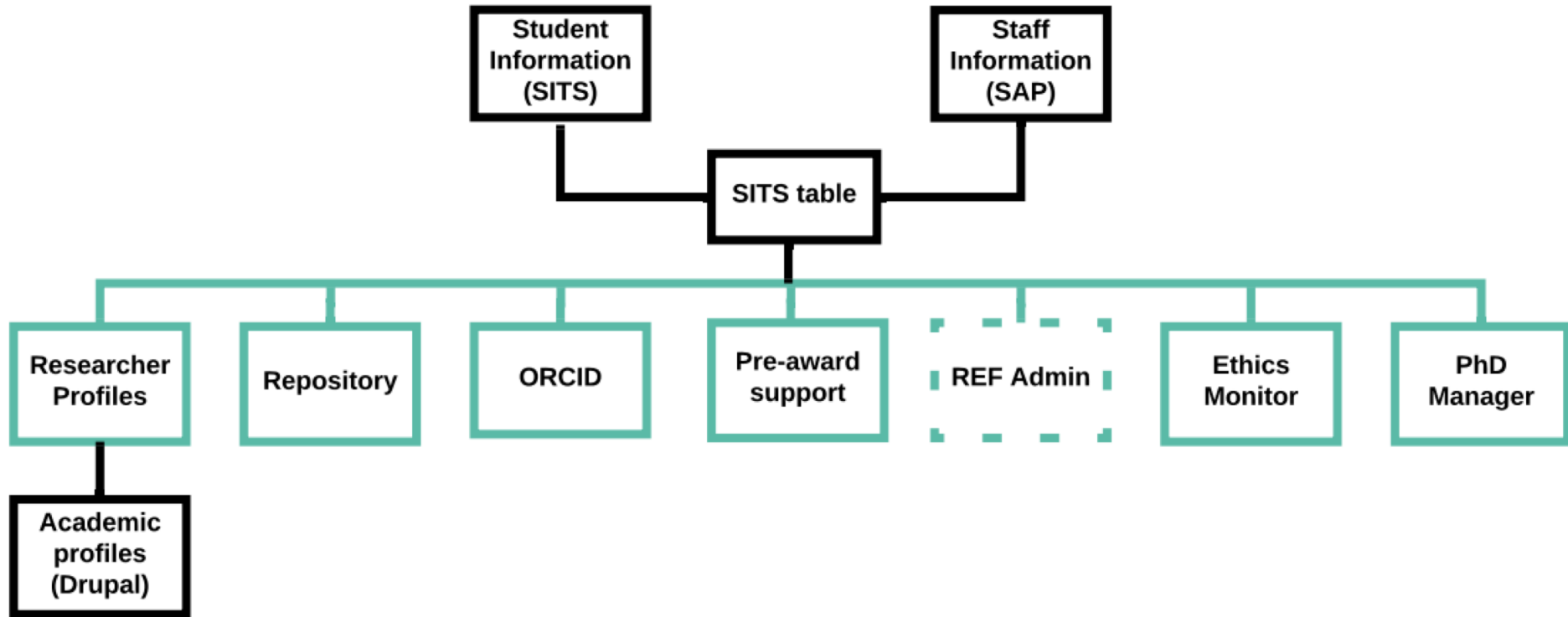
866 academic teaching staff,
680 visiting staff and 928
support staff



World leading research in Art and Design and Media and Communications;
Internationally excellent research in English, Architecture and the Built
Environment and Allied Health; Excellence in Psychology and
Neuroscience, Politics, Area Studies and Law (Research Excellence
Framework, 2014)

A Virtual Research Environment (VRE)

Haplo Research Manager



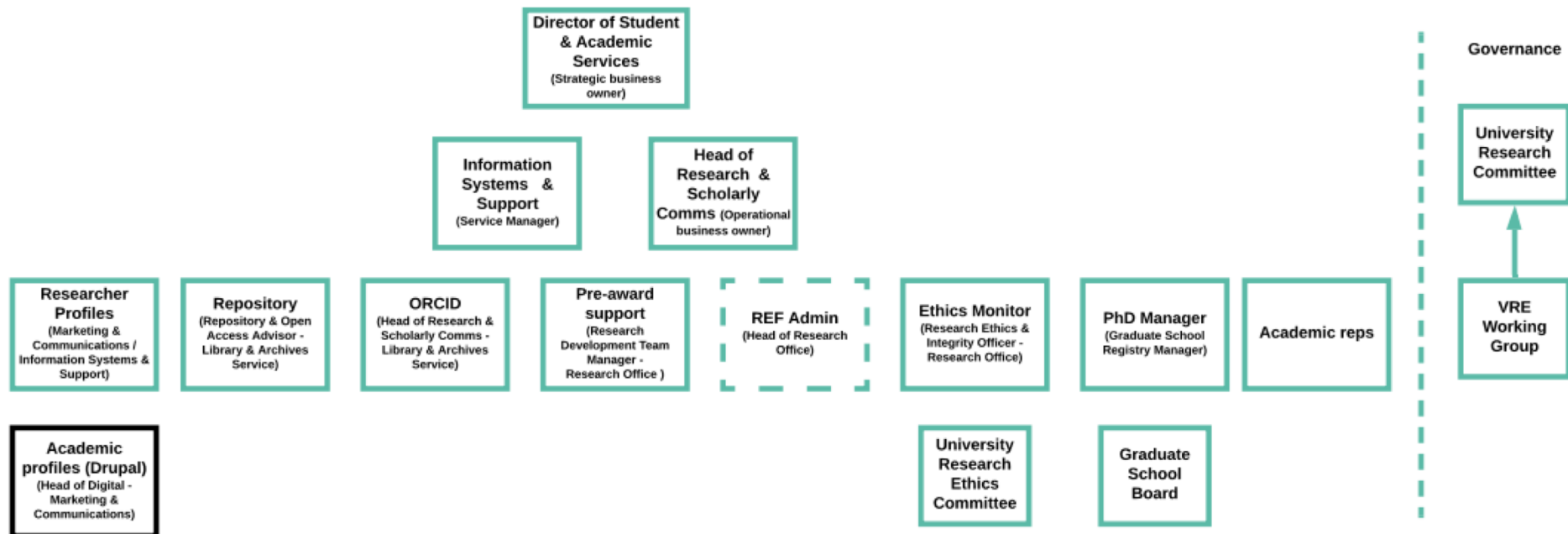
VRE

User interface



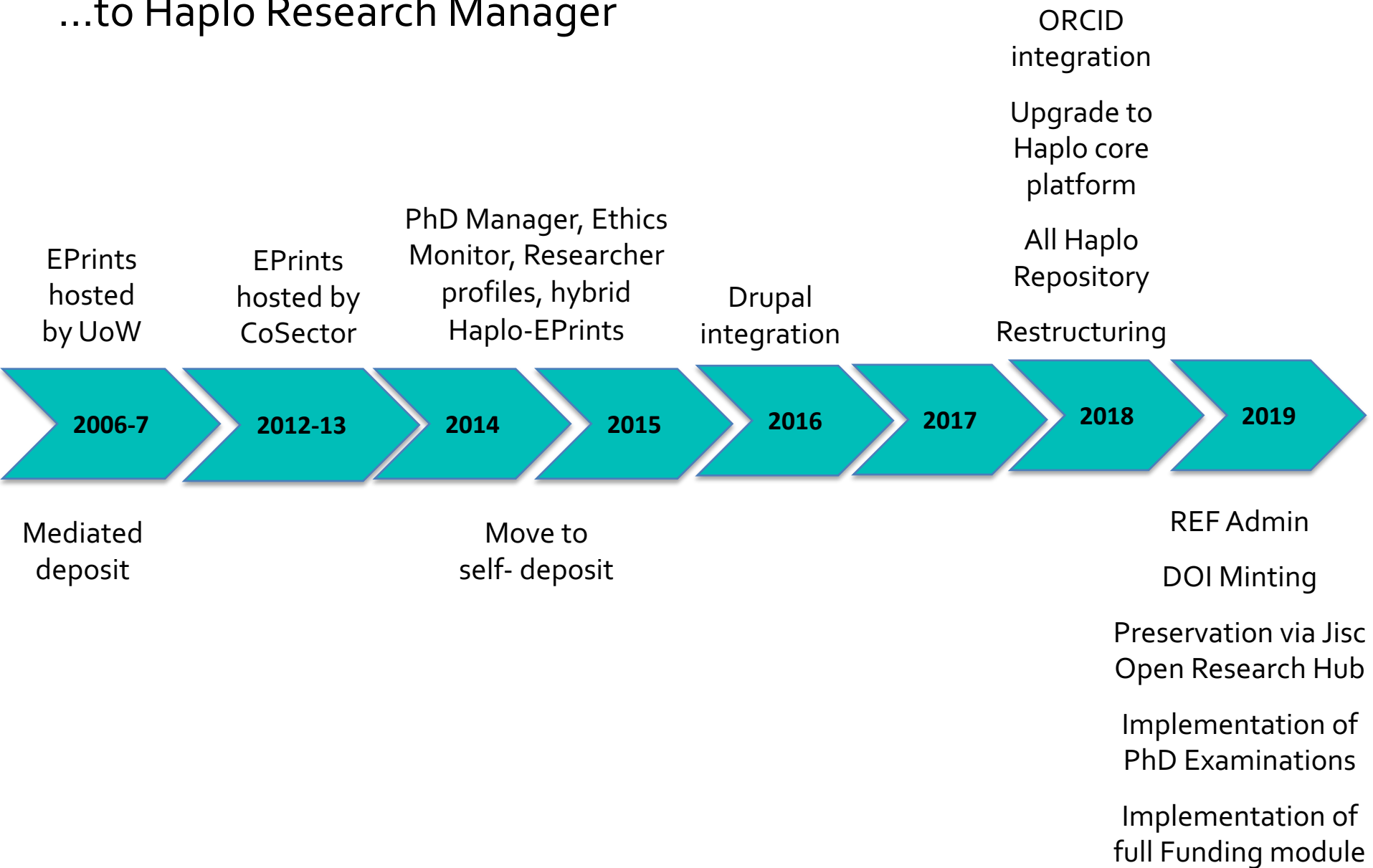
Stakeholder involvement

Roles and groups



The (long) road

...to Haplo Research Manager



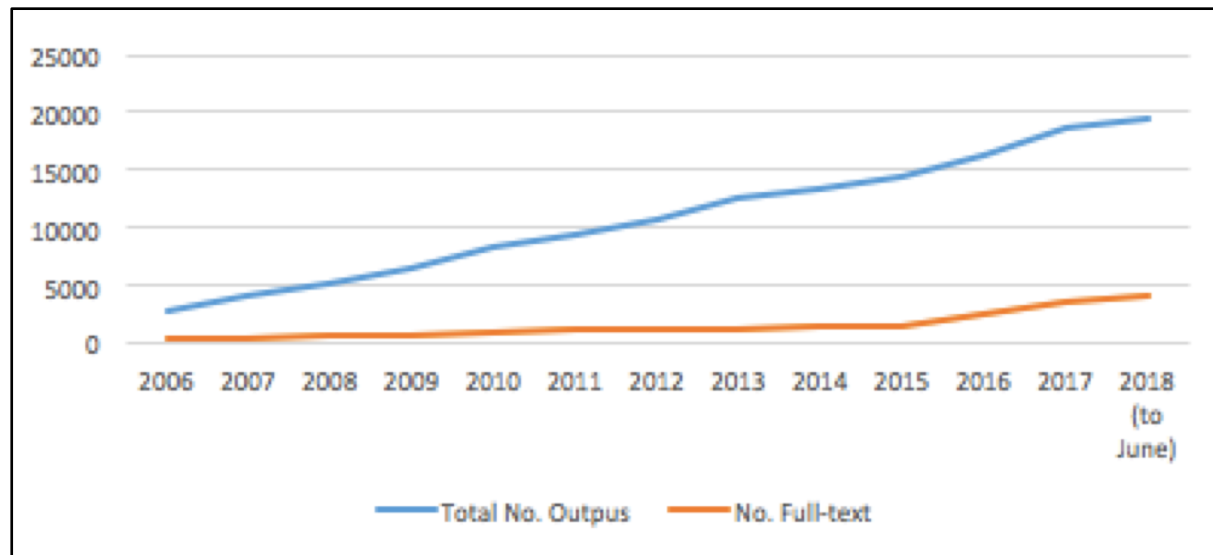
Hybrid repository solution

Haplo - EPrints

Noted increase in self-deposit (alongside introduction of the REF OA policy)

However...

- Limited metadata model
- Dated public interface
- Single use case
- Unable to manage portfolios and data



Number of outputs included in WestminsterResearch (2006 – June 2018)

Public interface

Pre-migration

Welcome to WestminsterResearch

WestminsterResearch is the University of Westminster's online repository, containing the research output of the University's academic community.

Thousands of publications are currently listed in the archive, many of which are accompanied by a full-text e-print and hundreds more provide a link to the full-text on the publisher's website.

WestminsterResearch is available through open-access.


Further information and help pages are available at:

<http://www.westminster.ac.uk/westminsterresearch>

Please note: This is not a complete listing of research publications of the University of Westminster.

If you would like to know more about WestminsterResearch or are interested in submitting papers, please check the help pages link above or contact:

repository@westminster.ac.uk

 Atom  RSS 1.0  RSS 2.0

[Latest Additions](#)

View items added to the repository in the past week.

[Search Repository](#)

Search the repository using a full range of fields. Use the search field at the top of the page for a quick search.

[Browse Repository](#)

Browse the items in the repository by subject.

Building the business case

To move to an All Haplo repository

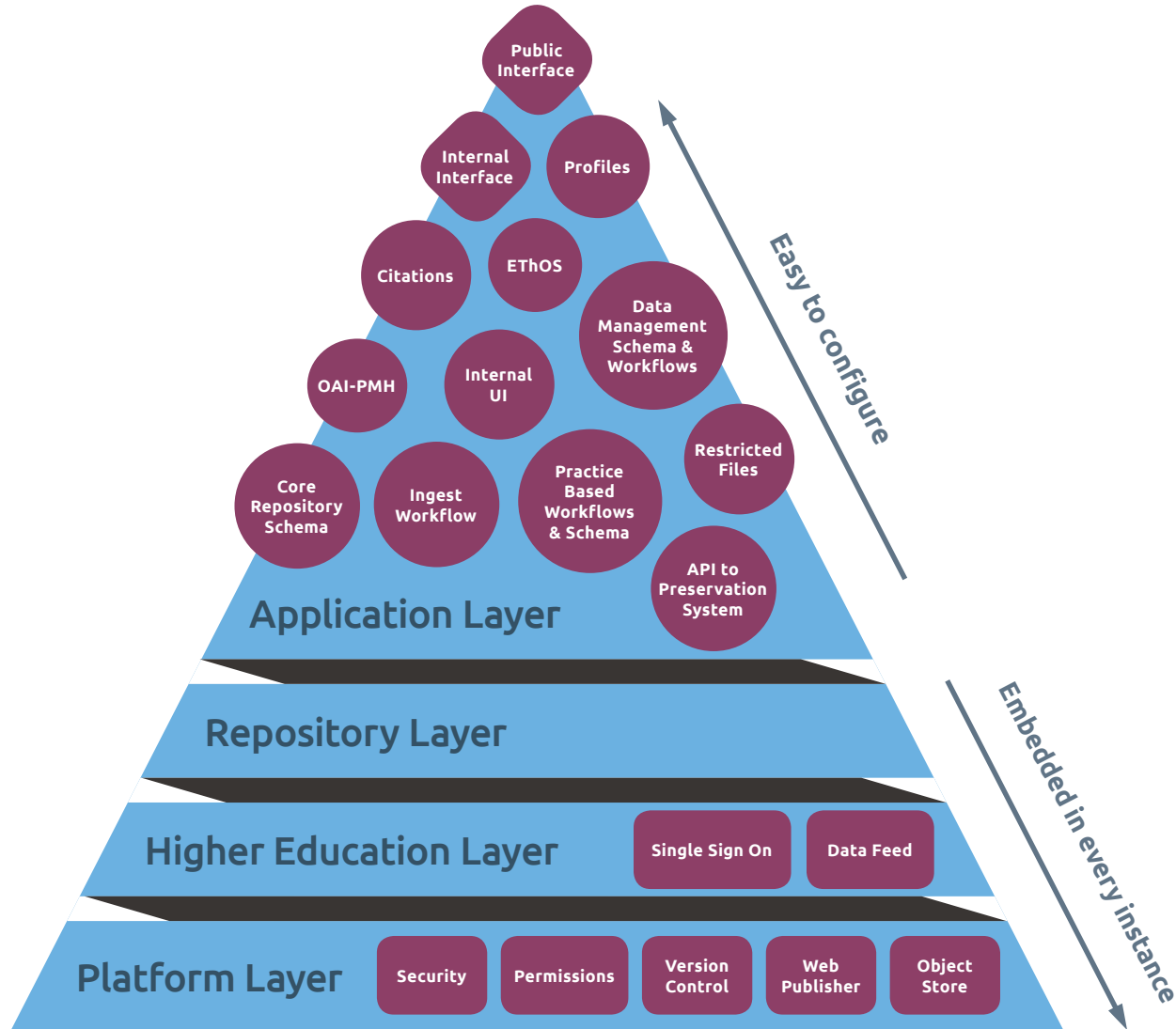
Perceived risk	Mitigation
Not being able to submit Research Excellence Framework (REF) return	Focus on standards & interoperability not software
Loss of access to EPrints community & developments	Growing Haplo user community
Security of supplier hosting sensitive data	Security built in at platform level
All our eggs in one basket?	Get out clause - able to export in EPrints compatible format

Risks of not moving? not capturing non-text outputs, costs involved in multiple subscriptions, unable to take advantage of EPrints developments nor develop hybrid solution

Building blocks for a CRIS & Repository

1. Data model
2. Workflows
3. Permissions
4. User Experience & Interface
5. Same underlying database as CRIS
6. Data shared between modules in CRIS, including Repository
7. Aggregate data from other systems

Repository architecture

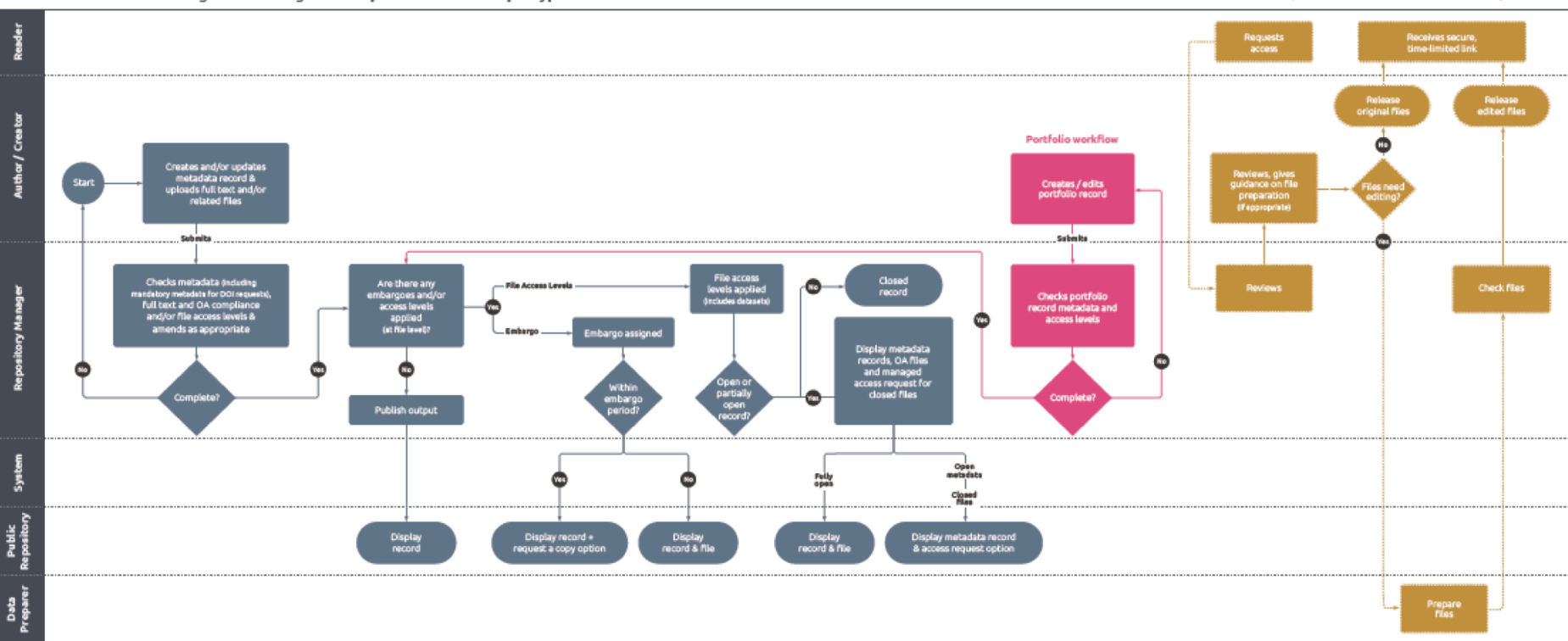


Evans, J. & Renner, T. (2019). A single open source repository for every use case (Poster). *International Digital Curation Conference*, Melbourne, 4-6 February 2019.

Workflows

One workflow for all outputs

Workflows streamline the ingest and managed access processes for all output types



Data model

Pervasive multi-values

All attributes are multi-value, and using multi-values works with all Haplo features.

Qualifiers

All attributes can be qualified (like Fully Qualified Dublin Core).

Links as primary data type

Model every "noun" as a type, then link from records instead of using free text. E.g. Authors have their own record, and Outputs link to authors. Allows 'data once' (e.g. ORCID iD on Author goes on all outputs) and easy querying. Used as much as possible, e.g. Projects, Publishers, Funders, Journals, Licenses, Subject, Open Access, File access levels...

Data model

...continued

Hierarchy support for links

Enables taxonomies, organisational structure, etc.

Pluggable data types

Some data types need special logic and display. Plugins can define special types, eg DOI, Author Citation, ORCID iD, ...

Computed attributes

Derive metadata from other records in the CRIS, using custom logic. E.g. Department is computed from department attribute of author at time of deposit.

Aliasing attributes

Use same underlying attribute for consistency and discoverability, but display and metadata crosswalk to appropriate name for the output. E.g. Author (text) aliases to Creator (non-text).

Building a repository

Requirements gathering, user testing, post-go live feedback

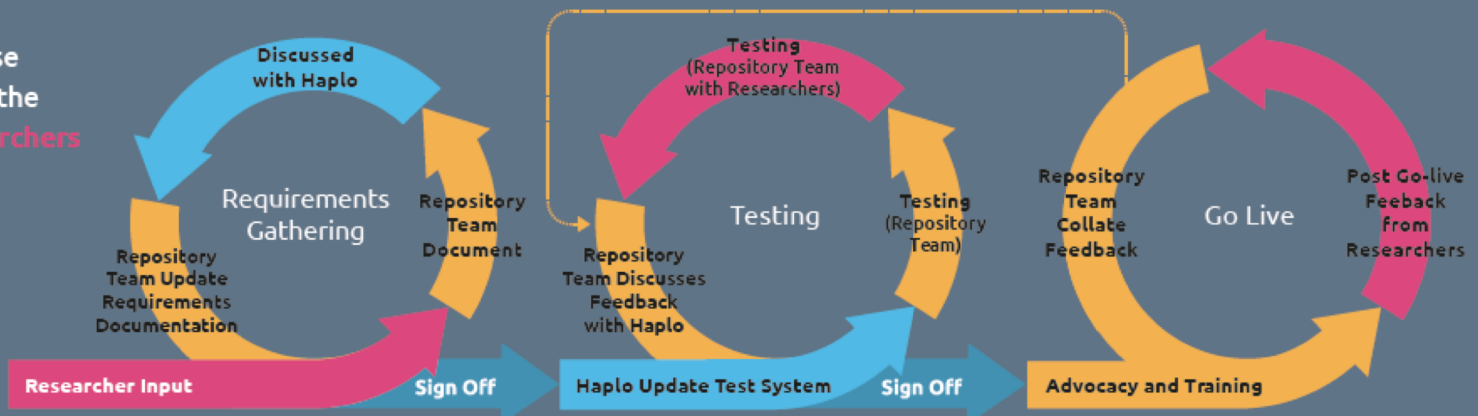
Our Repository and Open Access Advisor has over 10 years experience working with repositories

Focus on our practice-based arts research community

Involved colleagues at the two other universities who had signed up to build a Haplo repository

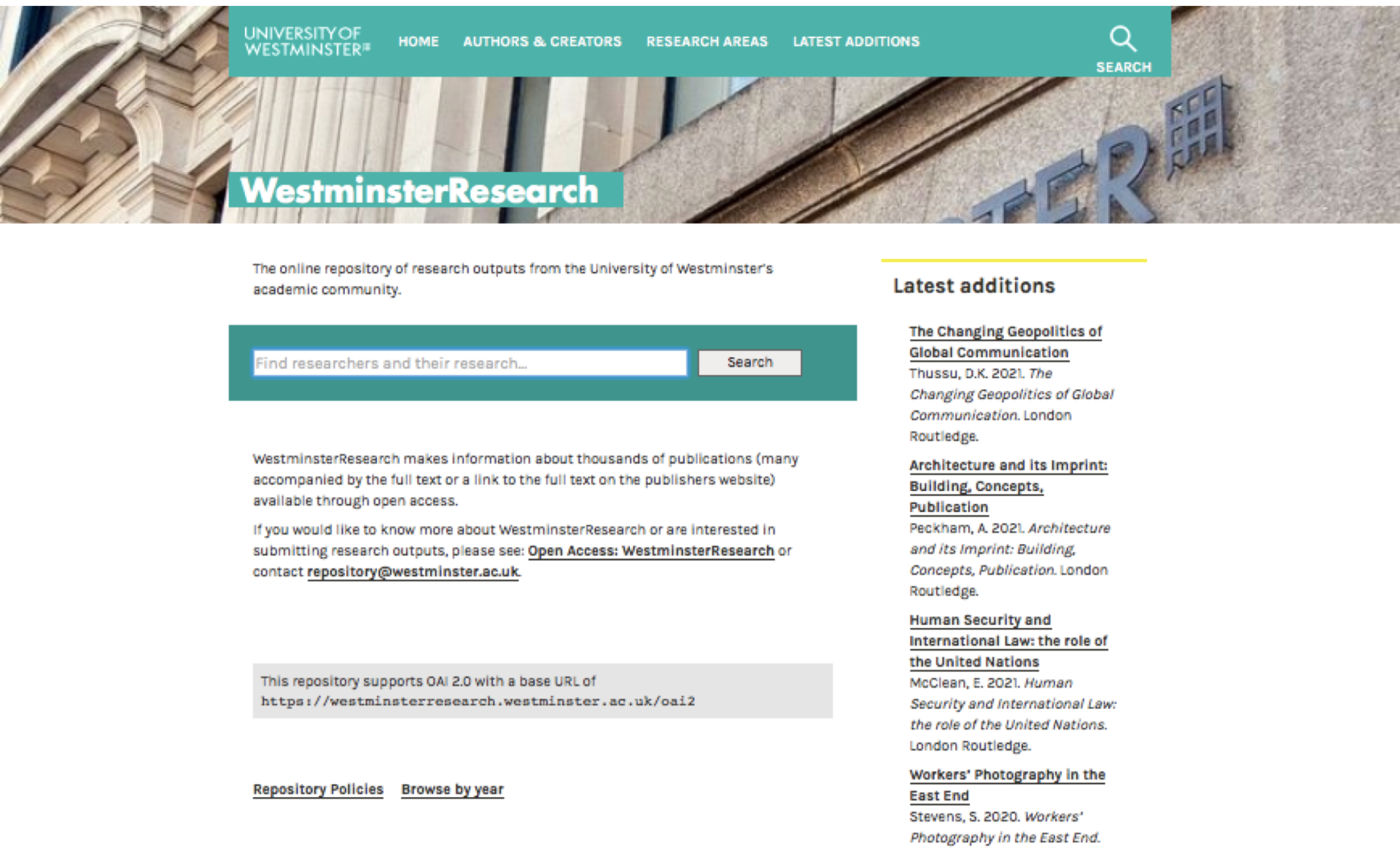
Wanted to build a standards-based repository that would be useful for the whole sector not just Westminster

Iterative cycles and close collaboration between the repository team, researchers and Haplo were key to successful deployment.



Public interface

Post-migration



UNIVERSITY OF
WESTMINSTER

HOME

AUTHORS & CREATORS

RESEARCH AREAS

LATEST ADDITIONS

SEARCH

WestminsterResearch

The online repository of research outputs from the University of Westminster's academic community.

Search

WestminsterResearch makes information about thousands of publications (many accompanied by the full text or a link to the full text on the publishers website) available through open access.

If you would like to know more about WestminsterResearch or are interested in submitting research outputs, please see: [Open Access: WestminsterResearch](#) or contact repository@westminster.ac.uk.

This repository supports OAI 2.0 with a base URL of
<https://westminsterresearch.westminster.ac.uk/oai2>

[Repository Policies](#) [Browse by year](#)

Latest additions

The Changing Geopolitics of Global Communication

Thussu, D.K. 2021. *The Changing Geopolitics of Global Communication*. London Routledge.

Architecture and its Imprint: Building, Concepts, Publication

Peckham, A. 2021. *Architecture and its Imprint: Building, Concepts, Publication*. London Routledge.

Human Security and International Law: the role of the United Nations

McClean, E. 2021. *Human Security and International Law: the role of the United Nations*. London Routledge.





Workers' Photography in the East End

Stevens, S. 2020. *Workers' Photography in the East End*.

Benefits

Record of any interaction between Author and Repository Manager

Tasks

 Publishing outputs (complete)	
 added a note:	19 Nov 2018, 13:54
I've just realised that the version I uploaded does not have figures/tables. Do you want a revised version with that included? The plan is for this to be Open Access given that it was funded by ESRC - I think this is a requirement.	
Nina Watts added a note:	19 Nov 2018, 14:34
I am returning this to you so that you can add the version with the missing material included. Nina	
Nina Watts returned the output for amendments	19 Nov 2018, 14:34
 submitted the output for review	19 Nov 2018, 14:38
Nina Watts published the output	19 Nov 2018, 15:47
 added a note:	07 Jan 2019, 18:04
The articles has now been published in GOLD OPEN ACCESS https://www.sciencedirect.com/science/article/pii/S0301421518307638#! Note that the publication date is 2019 (not 2018) And the abstract has been changed slightly. Can you cut and paste?	

Benefits

UK example of pluggable reporting and quality control

UK Research
Excellence
Framework (REF)
Open Access
compliance is
captured on each
record.

Click through for
details.

REF OA
Compliant
Passed: Manuscript deposited in time
Passed: Embargo within allowed length
Passed: Record contains required metadata

REF OA
Not compliant, exception needed
Add REF exception
Failed: Manuscript deposited in time
Failed: Embargo within allowed length
Failed: Record contains required metadata

REF OA
Compliant
Gold Open Access

REF OA
Not applicable: Out of scope of REF OA policy

Failed: Record contains required metadata

The following data are required in order to meet the Discovery requirements, or for calculation of compliance with the Embargo or Access requirements.

Field	Required	Value
Author	✓	Dr Harry Parkin
Acceptance date	✓	13 Apr 2018
Publication date	(✓)	
Deposit date	✓	02 Aug 2018
REF Unit of Assessment	✓	

Accepted manuscript

✓



[Surname Research and Recent Records - with amendments.docx](#)

Please note:

- a deposit date is only expected for items that have been deposited into the public repository
- a publication date is not expected for an 'In press' item

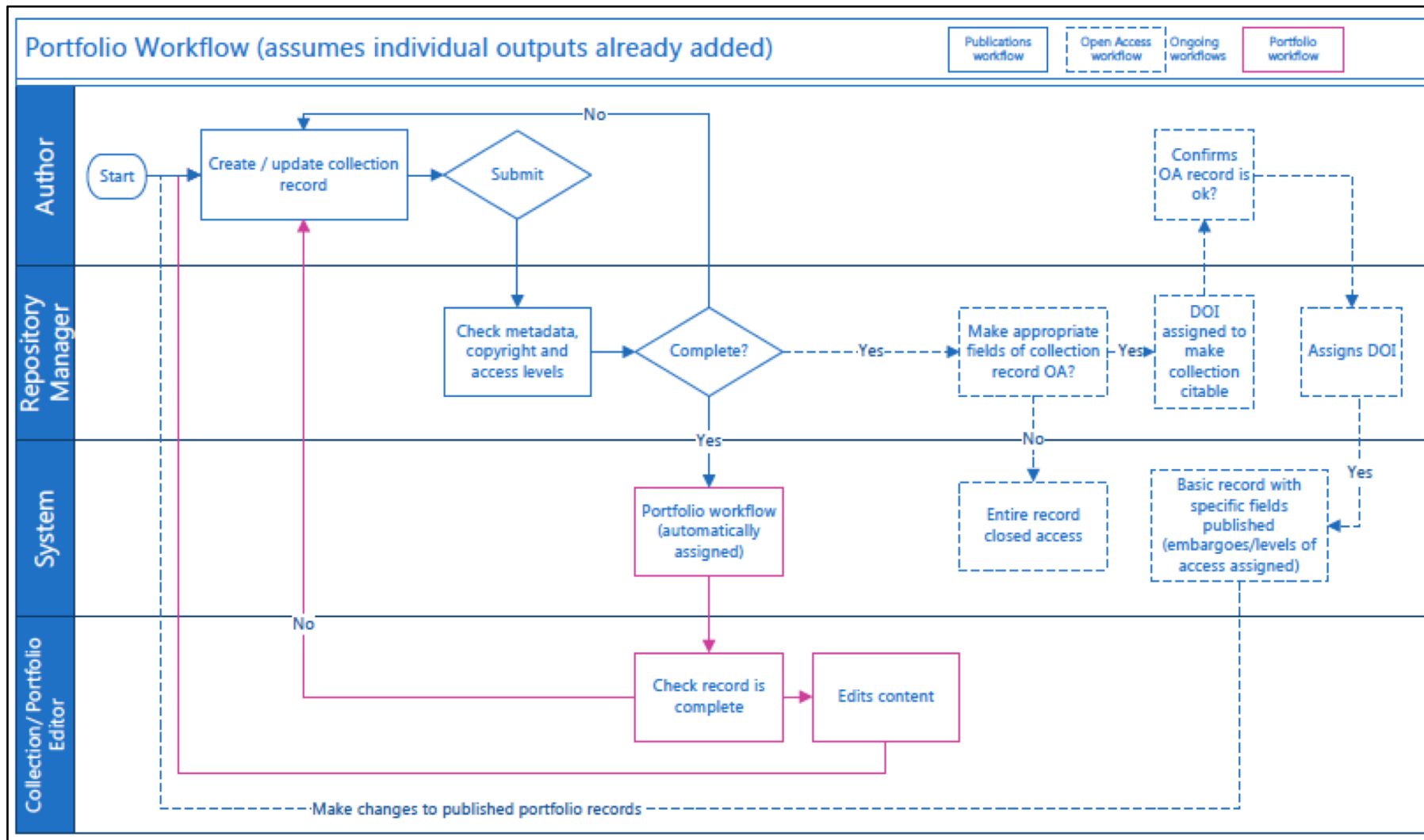
Practice-based arts research

Portfolios and non-text outputs: a case study

Brings together all of the benefits of the software

- One conversation – portfolios of outputs and their associated documentation
- Portfolio workflow (including Portfolio Editor role)
- REF template
- Non-text outputs metadata (Aliasing enables use of terms such as creator, description, contributor without impacting on other templates)
- Integrated with REF Admin workflows (almost live)
- The flexible metadata model meant we were able to not only listen to but deliver on their requests

Collection creation (portfolio) workflow



Non-text outputs

[illegible]

First request from researchers

“We want to be able to select non-text outputs”

- Text based output
- Non-text based output
- Portfolio of outputs

New output

- **Artefact**
An artist's work, product, or creation. May include work originating from design or architectural practices
- **Composition**
A sound recording or the score and/or description of a piece of music
- **Design**
Depiction or outline of a practice-based creation, e.g. fashion design, costume, stage design, interior, typeface, blueprint
- **Digital or visual media**
Examples include a digital photograph or visual image, a digital video, a sound recording
- **Exhibition**
An exhibition featuring your work, or one that you have curated
- **Performance**
A realisation of your work such as an art performance, reading, or staged play

Non-text outputs

Exhibition output type

[Back](#)

New Exhibition

Home

Calendar

University of Westminster
Design, Creative and Digital Industries
Liberal Arts and Sciences
Westminster Business School

Research groups and clusters

Committees
Upcoming meetings

Guides

Please complete this form as fully as possible. Fields may be left blank for information that is not applicable to this portfolio of outputs. The University repository will be alerted to new or edited portfolios of outputs.

[Preview](#) [Save](#)

REF Units of
Assessment

File



↑ Drag files here or [choose File...](#)

• Image credit



• Media type

- ✓ -- choose --
- Audio
- Image
- Video



• License



[click to set](#)

• File Access Level

- ☐ Closed (closed metadata and files)
- ☐ Controlled (open metadata, closed files)
- ☐ Open (open metadata and files)

• Exhibition title

• Keywords



• Publisher or commissioning body

• Project

• Funder

Portfolios

Home

Calendar

University of Westminster
Design, Creative and Digital Industries
Liberal Arts and Sciences
Westminster Business School

Research groups and clusters

Committee
Upcoming meetings


Guides

REF Units of Assessment

Transforming the University of Westminster Repository

Copy as new item Change output type

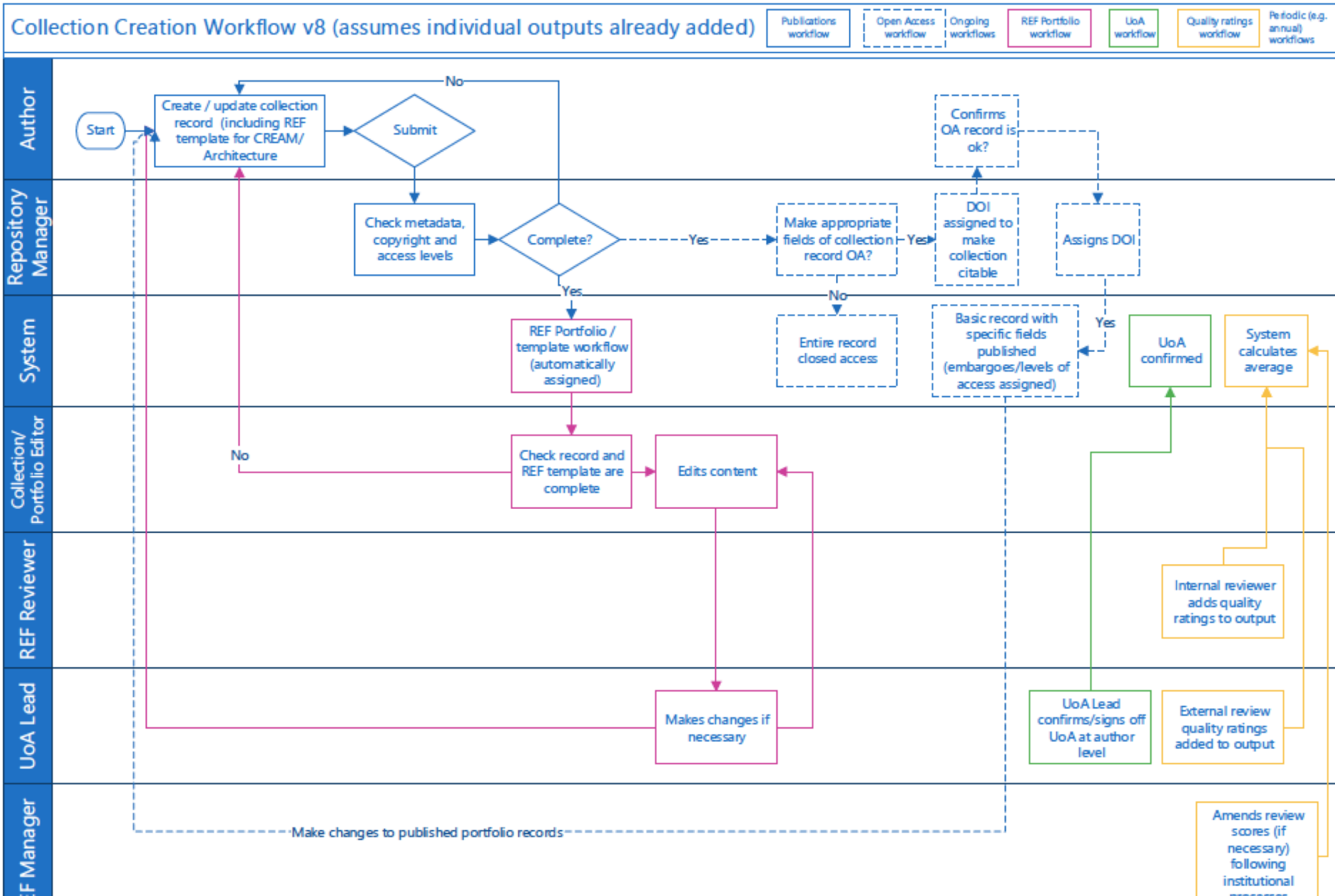
Portfolio

Title	Transforming the University of Westminster Repository
Creators	Evans, J., Renner, T. and Tribble, P.
Description	This portfolio brings together relevant work relating to the development of the University's new repository, the result of close collaboration between Westminster and Haplo. Key features of the repository include a single solution for text-based and non-text based outputs, dynamic portfolios and managed levels of access to files.
Portfolio Items	Keeping Data Safe: how to implement a secure repository Identifying the Different People and Systems Involved and Potential Areas for Risk Implementing a next-gen repository mid-REF cycle...madness or a stroke of genius? A Single Open Source Repository For Every Use Case Building an All Haplo repository: A partnership between institution and supplier, in collaboration with researchers and the user community
Year	2019
Keywords	repositories open access practice-based arts research non-text outputs
File	 Screen Shot 2019-01-15 at 12.18.25.png Download Versions Preview
File Access Level	Open (open metadata and files)
Jenny Evans submitted the record	15 Jan 2019, 12:25
Nina Watts added a note: Released as open access. Nina	15 Jan 2019, 16:05
Nina Watts confirmed the record as complete, and proposed Open Access release	15 Jan 2019, 16:05
Jenny Evans confirmed the Open Access release of the record	15 Jan 2019, 16:06

STATUS
Complete - Open
Access record released

REPOSITORY
[View in public repository](#)
[REF template](#)

Research Excellence Framework (REF)



Portfolio of outputs

[CURRENT STUDENTS](#) [ALUMNI](#) [STAFF](#) [LOG IN TO DEPOSIT](#)

UNIVERSITY OF WESTMINSTER[®] [HOME](#) [AUTHORS & CREATORS](#) [RESEARCH AREAS](#) [LATEST ADDITIONS](#) [SEARCH](#)

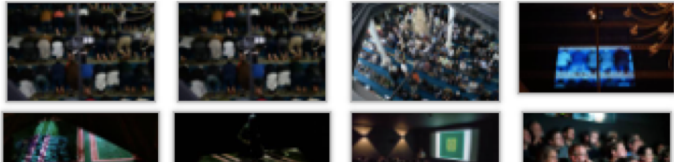
Portfolio

Assembly: performing the materiality of Muslim prayer spaces

Marsh, J. *Assembly: performing the materiality of Muslim prayer spaces.*

Share this

[Tweet](#) [Email](#)



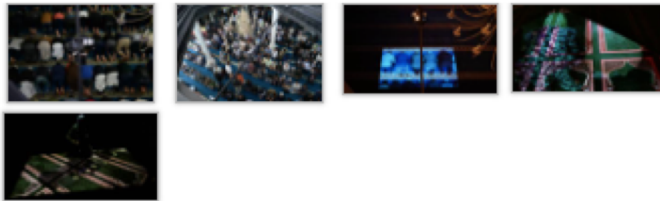
SHOW MORE ▾

CREATORS	Marsh, J.
COLLABORATORS	Birmingham Central Mosque
	Brick Lane Jamme Masjid
	Inclusive Mosque Initiative
DESCRIPTION	Assembly is a body of work and ongoing research, which performs the materiality of Muslim prayer space. Assembly is a series of site-specific installations, comprising of 1:1 scaled moving floor projections with 5.1-surround sound. As the audience enters each prayer site the projection is activated, revealing a pre-recorded film of congregational prayer. The

Exhibition

Jamaat (2018)

Marsh, J. 2018. *Jamaat (2018)*. Brick Lane Mosque



CREATORS	Marsh, J.
COLLABORATORS	Brick Lane Jamme Masjid community Inclusive Mosque Initiative
CINEMATOGRAPHER	Jonathan Fuller-Rowell
DESCRIPTION	<p>Assembly is a site-specific research project made in collaboration with Brick Lane Jamme Masjid community. <i>Jamaat (2018)</i> (translated from Arabic meaning assembly) was made and exhibited respecting the religious and cultural rules of the mosque. The mechanical recording device was used as an anonymous eye; in a culturally sensitive environment such as the mosque, the objectivity of the machine allowed entry to a place that is forbidden for a female non-Muslim.</p> <p>The camera was not permitted to film in front of the people praying, nor could it show their faces. Subsequently, an</p>

Explore this collection

[Assembly: Artist Talk at
Closeup Film Centre](#)

*Marsh, J. 2018. Assembly: Artist
Talk at Closeup Film Centre.
Julie Marsh.*

[Assembly Exhibition
Catalogue](#)

*Marsh, J. 2018. Assembly
Exhibition Catalogue. London
Julie Marsh.*

[Salat \(2016\)](#)

*Marsh, J. 2016. Salat (2016).
Birmingham Central Mosque*

Share this



Tweet



Email

Other

Assembly: Artist Talk at Closeup Film Centre

Marsh, J. 2018. *Assembly: Artist Talk at Closeup Film Centre*. Julie Marsh.



TITLE	Assembly: Artist Talk at Closeup Film Centre
AUTHORS	Marsh, J.
ABSTRACT	<p>Assembly, a site-specific performance and artist talk where Julie Marsh shared her latest site-specific artwork made in collaboration with Brick Lane Jamme Masjid community. Through integrity to site this research aims to avoid the fixed representation of social space by an open, genuine investigation. The artist talk was held at Close-up cinema, followed by a short walk to Brick Lane Jamme Masjid to experience the artwork.</p> <p>Speakers: Julie Marsh: Filmmaker & Researcher at CREAM, University of Westminster Naima Kahn: Trustee of the Inclusive Mosque Initiative Matt Webber: Social Anthropologist at University College London & SOAS</p>

Explore this collection

Jamaat (2018)

Marsh, J. 2018. *Jamaat (2018)*.
Brick Lane Mosque

Assembly Exhibition Catalogue

Marsh, J. 2018. *Assembly Exhibition Catalogue*. London
Julie Marsh.

Salat (2016)

Marsh, J. 2016. *Salat (2016)*.
Birmingham Central Mosque

Share this



Tweet



Email

Exhibition

Salat (2016)

Marsh, J. 2016. *Salat (2016)*. Birmingham Central Mosque



CREATORS

[Marsh, J.](#)

COLLABORATORS

Birmingham Central Mosque

DESCRIPTION

Salat (2016) is made and performed in collaboration with Birmingham Central Mosque congregation. The research proposes a new approach to site-specificity; a collaboration between community, artist, machine and site. A key concern is how the collaboration between artist and congregation can inform much of the decision-making around production. Bespoke mechanical rigs perform a dual function, firstly, to record site and secondly to playback the footage in synchronised time and space.

Salat (2016) brings forth a precise relationship between body and space, helped by the fact that the people it addresses are coming to worship and therefore invested in the place. The congregation question how the projected image relates to the real space and how the experience of the real space is mediated by the image.

Salat (2016) challenges ideas about what such happen in a sacred space as the worshippers physically re-oriented themselves to their own image, witnessing the projected image of their body move over their physical body in the site. It

Explore this collection

[Jamaat \(2018\)](#)

*Marsh, J. 2018. Jamaat (2018).
Brick Lane Mosque*

[Assembly: Artist Talk at
Closeup Film Centre](#)

*Marsh, J. 2018. Assembly: Artist
Talk at Closeup Film Centre.
Julie Marsh.*

[Assembly Exhibition
Catalogue](#)

*Marsh, J. 2018. Assembly
Exhibition Catalogue. London
Julie Marsh.*

Share this




Tweet



Email

Assembly Exhibition Catalogue

Marsh, J. 2018. *Assembly Exhibition Catalogue*. London Julie Marsh.

TITLE	Assembly Exhibition Catalogue
TYPE	Exhibition catalogue
AUTHORS	Marsh, J.
ABSTRACT	Assembly is a site-specific research project made and exhibited in Brick Lane Mosque. Jamaat (2018) (Arabic: جماعة) (meaning Assembly) comprises of two simultaneous film installations, one in the main prayer hall and one in the female prayer room. At the end of the residency, the Jamme Masjid invite the general public into both sites of worship, providing an opportunity for Muslims and non-Muslims to experience Jamaat prayer via the site-performance.
KEYWORDS	site-specific
	film installation
	performance
	documentary
	collaborative
	Art
	society
	interdisciplinary
YEAR	2018
PUBLISHER	Julie Marsh
FILE	 Julie Marsh_ASSEMBLY.pdf

Explore this collection

Jamaat (2018)

Marsh, J. 2018. *Jamaat (2018)*.
Brick Lane Mosque

Assembly: Artist Talk at Closeup Film Centre

Marsh, J. 2018. *Assembly: Artist
Talk at Closeup Film Centre*.
Julie Marsh.

Salat (2016)

Marsh, J. 2016. *Salat (2016)*.
Birmingham Central Mosque

Share this



Tweet



Email

The Repository is the CRIS, and the CRIS is the Repository

Challenges

Diverse stakeholder group can get unwieldy

Different users may have different priorities

(Research Development Team want absolute control over 'Funder' whereas Repository wants the researcher to be able to add new Funders)

Amount of feedback and trying to build that into updates

Time it takes to co-ordinate such a broad range of functions

Things outside our control e.g. recent website redevelopment project

Workflows are so intuitive if something is slightly wrong people notice

Access is so granular it isn't always easy to describe what one person can do – it depends on their role/s

The Repository is the CRIS, and the CRIS is the Repository

Benefits

One place for researchers to interact with research related information

Level of awareness amongst researchers

Engagement with the practice-based arts and architecture community

Has really developed connections between Professional Services teams and with the academic community

Linked data and single source of truth for everything e.g. information on the Author record such as Department is shared onto records in all areas of functionality and automatically updated when this is changed (e.g. ORCID iD is added to the Author record and immediately available in output records)

Security – access built in at platform level and at field level

Lower subscription and support costs – fewer integrations to maintain

Post go-live

Work continues

REF Admin module – currently in testing

Preservation via Jisc Open Research Hub (Archivematica/Arkivum)

Post-go live repository functionality

Upgrade to core platform for Funding and Graduate School Examinations

Thank you!

Jenny Evans, University of
Westminster

evansje@westminster.ac.uk
@jennye

<https://westminsterresearch.westminster.ac.uk/item/q9x2v/transforming-the-university-of-westminster-repository>

Portfolio

Transforming the University of Westminster Repository

Evans, J., Renner, T. and Tribble, P. 2019. *Transforming the University of Westminster Repository*.



CREATORS

Evans, J., Renner, T. and Tribble, P.

DESCRIPTION

This portfolio brings together relevant work relating to the development of the University's new repository, the result of close collaboration between Westminster and Haplo. Key features of the repository include a single solution for text-based and non-text based outputs, dynamic portfolios and managed levels of access to files.

YEAR

2019

KEYWORDS

repositories

open access

practice-based arts research

non-text outputs

FILE



Screen Shot 2019-01-15 at 12.18.25.png