

Practice-based arts research in repositories: how do we better engage with researchers to capture, manage and enable discoverability of this research?

Open Repositories 2019, Hamburg, Panel discussion

Prof Neal White, Professor of Art/Science, Centre for Research and Education in Arts and Media, University of Westminster

Nicola Siminson, Institutional Repository and Records Manager, Glasgow School of Art

Jenny Evans, Head of Research and Scholarly Communications, University of Westminster

Tom Renner, Senior Developer, Haplo

John Kaye, Head of Change – Research, Jisc

Shared Google Doc: <http://bit.ly/2IFH5Xt>

The small, specialist institution: The Glasgow School of Art



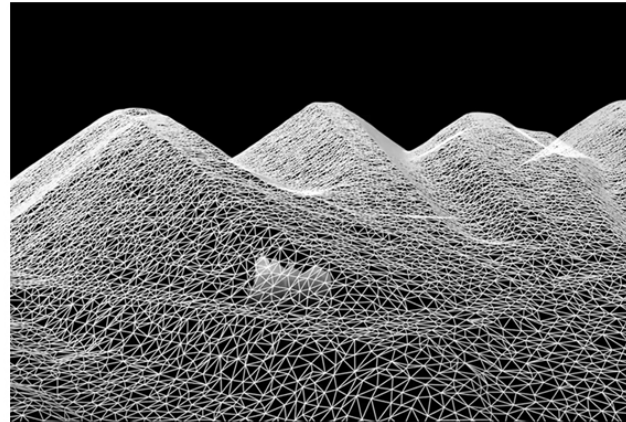
Nicola Siminson

Institutional Repository and
Records Manager

n.siminson@gsa.ac.uk

Nicky Bird et al: “Heritage Site, 2016” Exhibition

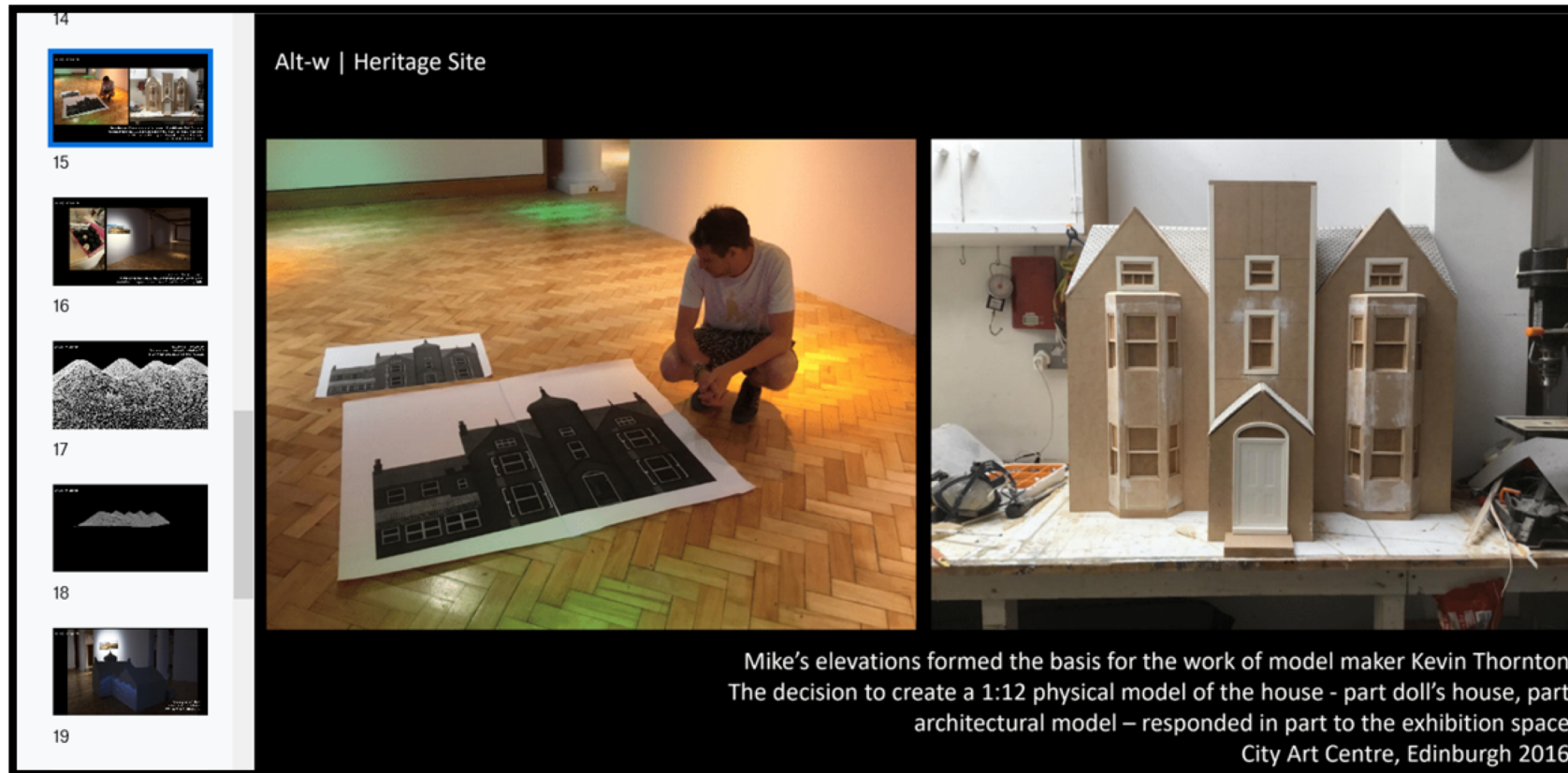
Heritage Site (2016)
Nicky Bird



Nicky Bird (Photograph, Five Sisters)
Kev Thorton (1:12 physical model of Westwood House)
Clare Graham (Digital projection of point cloud animation)
City Art Centre, Edinburgh Arts Festival, 2016

<http://radar.gsa.ac.uk/5088/>

Nicky Bird: “Heritage Site, 2014 - 2016” (taken from Nicky’s website)



A cheeky advert...

... for our OR 2019 24x7 “rant” later today!

“Square pegs, round holes: how do we make repositories work for arts research?”

3.30 - 5pm

P6C: 24x7s: Interoperability

Lecture Hall C



Broad range of disciplines and as such outputs

Benefit of a practice-based arts research community who can articulate their research

Create outputs, document the research process and collect this all together in a dynamic portfolio
- Draws together research data management and open access

We are lucky – we have a repository (Haplo) that does this...a need to agree on relevant standards and schema (and articulate it in a user-friendly way to researchers)

Challenges including a lack of funding in these disciplines, language, copyright...

Capture, archive and preserve and make this content discoverable – if we don't – who will?

Very UK-centric approach – what is the rest of the world doing?

Portfolio of individual research outputs

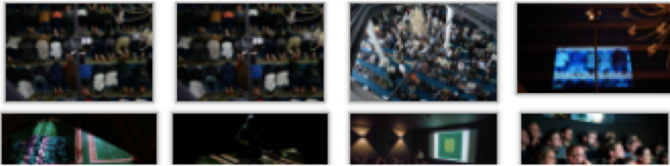
UNIVERSITY OF WESTMINSTER® HOME AUTHORS & CREATORS RESEARCH AREAS LATEST ADDITIONS

CURRENT STUDENTS ADMIN STAFF

Portfolio

Assembly: performing the materiality of Muslim prayer spaces

Marsh, J. *Assembly: performing the materiality of Muslim prayer spaces.*



SHOW MORE ▼

CREATORS	Marsh, J.
COLLABORATORS	Birmingham Central Mosque Brick Lane Jamme Masjid Inclusive Mosque Initiative
DESCRIPTION	Assembly is a body of work and ongoing research, which performs the materiality of Muslim prayer space. Assembly is a series of site-specific installations, comprising of 1:1 scaled moving floor projections with 5.1-surround sound. As the audience enters each prayer site the projection is activated, revealing a pre-recorded film of congregational prayer. The

UNIVERSITY OF WESTMINSTER® HOME AUTHORS & CREATORS RESEARCH AREAS LATEST ADDITIONS

Assembly Exhibition Catalogue

Marsh, J. 2018. *Assembly Exhibition Catalogue*. London Julie Marsh.

Explore this collection

UNIVERSITY OF WESTMINSTER® HOME AUTHORS & CREATORS RESEARCH AREAS LATEST ADDITIONS

Other

Assembly: Artist Talk at Closeup Film Centre

Marsh, J. 2018. *Assembly: Artist Talk at Closeup Film Centre*. Julie Marsh.

UNIVERSITY OF WESTMINSTER® HOME AUTHORS & CREATORS RESEARCH AREAS LATEST ADDITIONS

Exhibition

Jamaat (2018)

Marsh, J. 2018. *Jamaat (2018)*. Brick Lane Mosque



CREATORS [Marsh, J.](#)

COLLABORATORS Brick Lane Jamme Masjid community
Inclusive Mosque Initiative

CINEMATOGRAPHER Jonathan Fuller-Rowell

DESCRIPTION
Assembly is a site-specific research project made in collaboration with Brick Lane Jamme Masjid community. *Jamaat (2018)* (translated from Arabic meaning assembly) was made and exhibited respecting the religious and cultural rules of the mosque. The mechanical recording device was used as an anonymous eye; in a culturally sensitive environment such as the mosque, the objectivity of the machine allowed entry to a place that is forbidden for a female non-Muslim.
The camera was not permitted to film in front of the people praying, nor could it show their faces. Subsequently, an

Explore this collection

[Assembly: Artist Talk at Closeup Film Centre](#)
Marsh, J. 2018. *Assembly: Artist Talk at Closeup Film Centre*. Julie Marsh.

[Assembly Exhibition Catalogue](#)
Marsh, J. 2018. *Assembly Exhibition Catalogue*. London Julie Marsh.

[Salat \(2016\)](#)
Marsh, J. 2016. *Salat (2016)*. Birmingham Central Mosque

Share this

Tweet Email



Jisc

Practice research

Open Repositories 2019

20 June, 2019

Capturing practice research event

Key challenges raised

- ◆ No clear definition of practice research
- ◆ A lack of diversity in the policy landscape
- ◆ The 'REF graveyard'
- ◆ Form and nature of practice research
- ◆ Systems, standards and metadata
- ◆ Support for researchers
- ◆ Copyright
- ◆ Multidisciplinary institutions



Event write up: <https://bit.ly/2CHZOja>

Capturing practice research event

Priorities and next steps

- ◆ Defining practice research
- ◆ Policy
- ◆ Researcher support engagement
- ◆ Systems and design
- ◆ Sharing



Prof Deborah Sugg Ryan
@DeborahSuggRyan



How can we develop a common language for practice research so we don't have to constantly explain ourselves to colleagues in other fields? [#jiscoa](#) [#REF2021](#)

♡ 3 · 11:29 AM · Mar 15, 2019 · London, England



Jisc Open Access @JiscOpenAccess · Mar 15



Round-table discussions coming to a close with passionate cries for user-centeredness in whatever activities we undertake [#JiscOA](#)

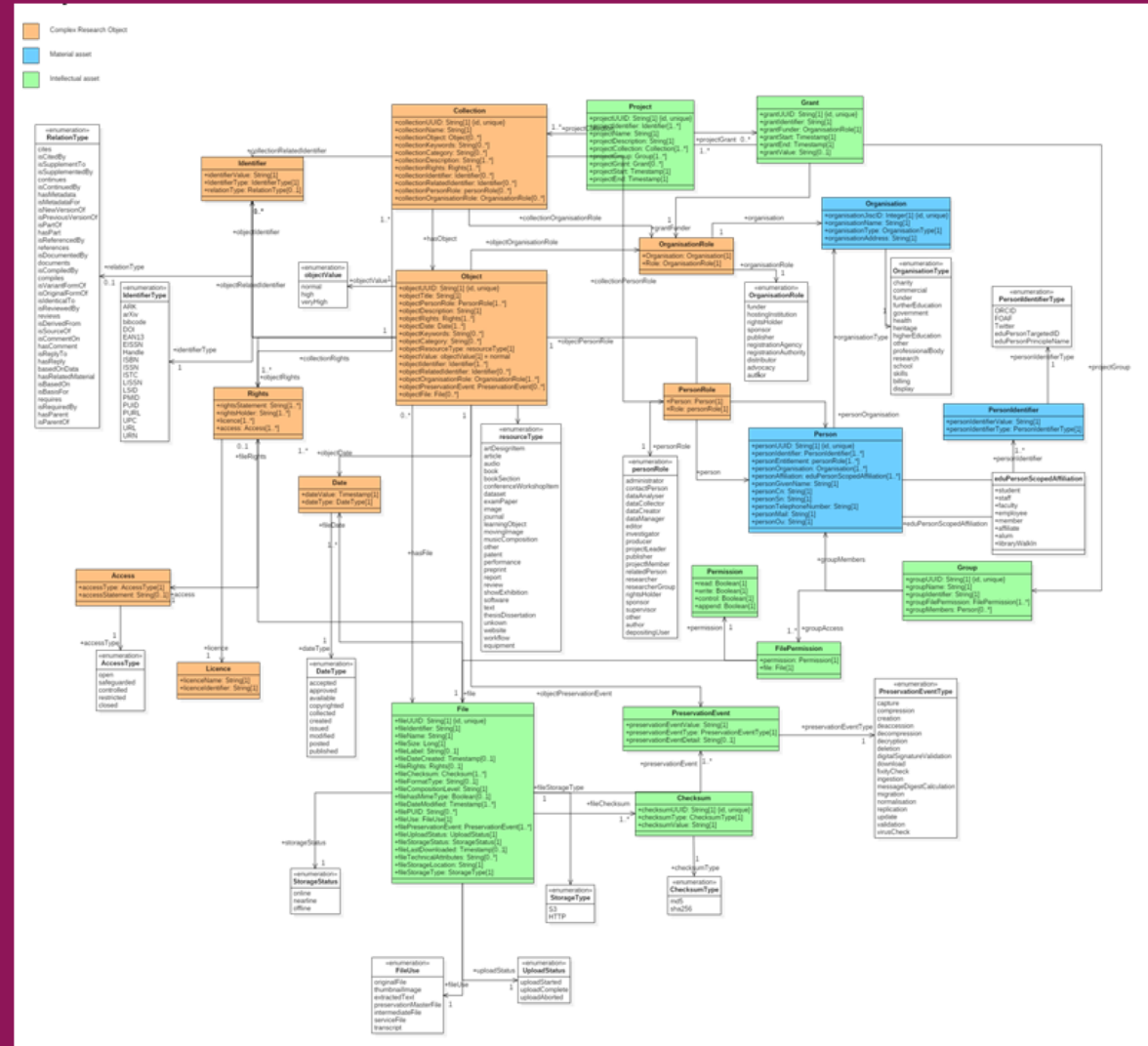


Event write up: <https://bit.ly/2CHZOja>

What do we need to progress?

Consensus

- ◆ Definition
- ◆ Metadata
- ◆ Implementation in next generation repositories



Collaboration and internationalisation

More than a UK REF problem

- ◆ Learn from international best practice
- ◆ Do you have issues/success with practice?
- ◆ Research Data Alliance to generate consensus



John Kaye

John.Kaye@jisc.ac.uk

15 Fetter Lane, London, EC4A 1BW

T: 07973 432093

jisc.ac.uk



Questions Neal posed...

1. How do we make our contributions public? Publishing an exhibition or film – there's a lot of underpinning research and that is the challenge – what is the best way to articulate this to make it accessible?
2. How do we make it mobile? We move from one institution to another.
3. Formats/underlying software/protocols – the same or at least transferrable and if we are doing that – who decides what this is?