

University of Westminster

School of Communication and Creative Industries

Researcher: Emmanouil Skoufias

Subject: The construction of Narrative in Landscape Photography

Questionnaire II

Please complete the following questions

Name:

Gender: Male / Female

Age:

Nationality:

Email:

Place of origin: Urban / Rural

Place of living: Urban / Rural

How often do you visit the countryside? Please circle one the following categories.

Hardly Ever

Very rare (1-2 times per year)

Rare (3-6 times per year)

Often (7-12 times per year)

Very Often (more than 12 per year)

Every week

This questionnaire is created in order to investigate the audience response to landscape images. It is part of a photographic research, which explores the construction of narrative in landscape photography. The specific type of landscape that is being explored is the transitional landscape, the depiction of spaces located between the rural and urban areas.

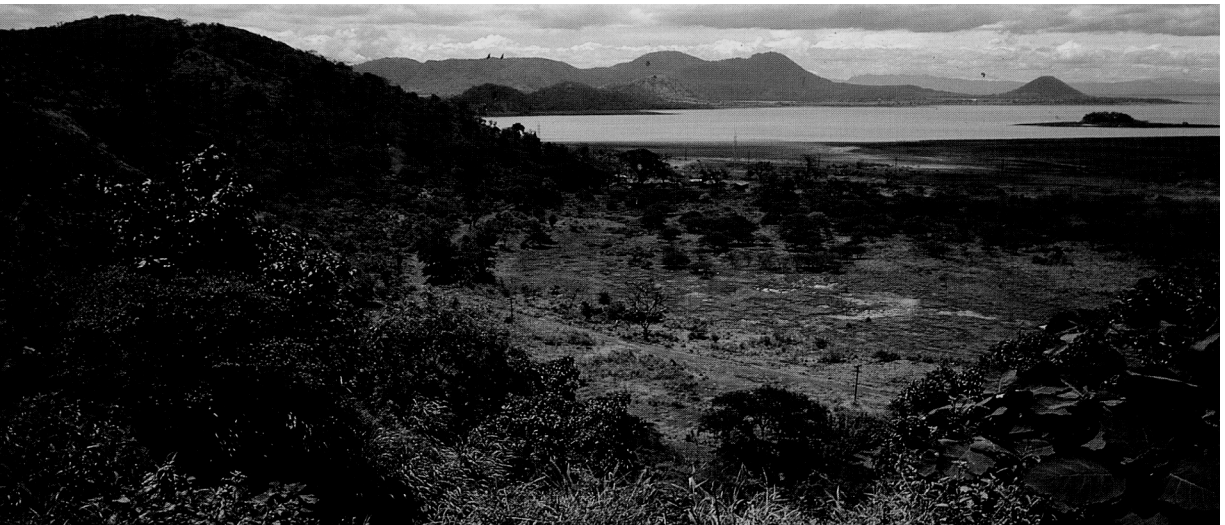
1



2



3



Question 1: Do any of the above versions of the same landscape image prompt you to imagine a story?

If so, with which one is it easier and please state why. What kind of story could it be?

If not, what do you think is missing in order to prompt a potential narrative?

1



2



3

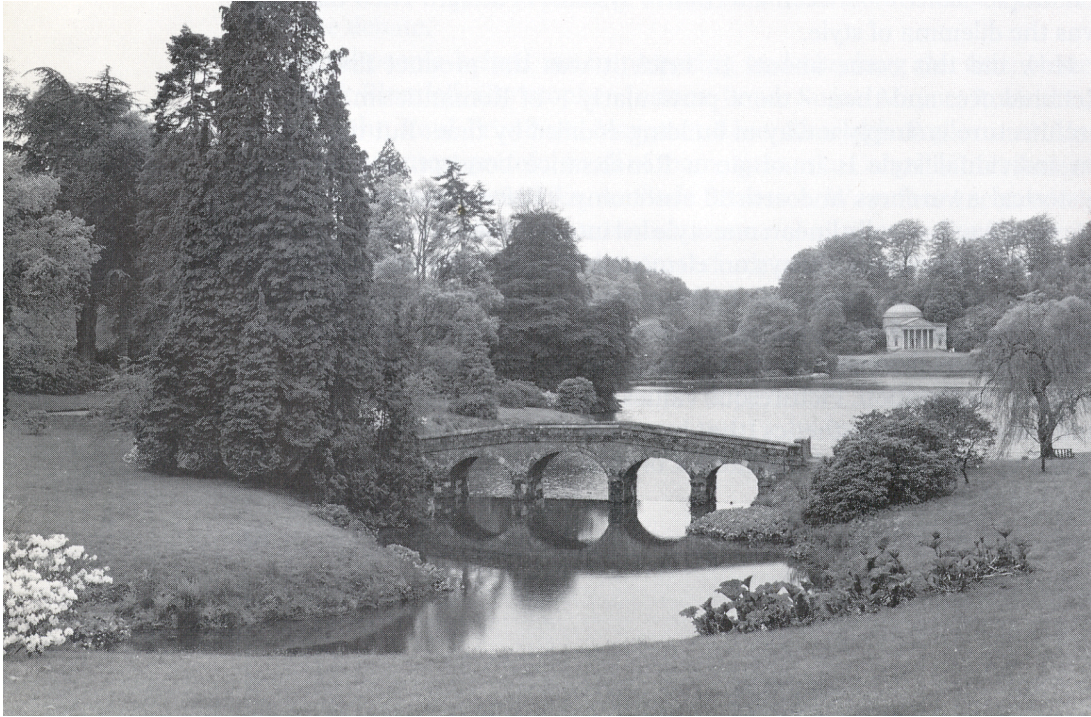


4



**Question 2: Do any of the four landscape images prompt you to imagine a story?
If so, in which one/s is it easier and please state why. What kind of story could it be?**

1



2



3



4



Question 3: If we assume that a landscape photograph may have narrative implications what kind of narrative does each of the above type of landscape imply?

1.

2.

3.

4.

1



2



3



4



Question 4: Please choose one of the four landscapes and write a brief story below based upon it.

Question 5: Which part(s) or value(s) of the chosen landscape image in Question 4 triggered your imagination in writing the story? (E.g. Composition, content, light, e.t.c.)

Photographic credits

All photographs were made by the researcher except the above:

Susan Meiselas, “Cuesta del Plomo”, Nicaragua, 1981. (Cropped) Question 1

Picturesque landscape (Stourhead, Wiltshire (1740s-60s). Question 3

Romantic Landscape (George Vincent, A distant view of Pevensey Bay, the Landing Place of King William the Conqueror, 1824). Question 3

Sublime (Timothy H.O’Sullivan, Ogden, Utah, 1874). Question 3