



IDENTIFIERS FOR PRACTICE RESEARCH UK DATACITE SUMMER MEETING

12 SEPTEMBER 2022

JENNY EVANS, RESEARCH ENVIRONMENT AND SCHOLARLY COMMS LEAD AND PRVOICES PROJECT PI

PRACTICE RESEARCH VOICES (PRVOICES)



1. Definitions

2. About the project and update

3. Metadata and Persistent Identifiers

Practice research output types

DataCite

RAiD

CRedit

4. What does this mean for DataCite?

5. Next steps

PRACTICE RESEARCH: DEFINITIONS

Practice research

“An umbrella term that describes all manners of research where practice is the significant method of research conveyed in a research output. This includes numerous discipline-specific formulations of practice research, which have distinct and unique balances of practice, research narrative and complementary methods within their projects.”

Research narrative

“In a practice research output, a research narrative may be conjoined with, or embodied in, practice. A research narrative articulates the research enquiry that emerges in practice.”

PRACTICE RESEARCH VOICES (@PRVOICES)

- **Scoping a national practice research repository using** (as a foundation) the Haplo (now Cayuse) **repository** that **embedded practice research from the beginning**
- Moving to a **repositories, discoverability and interoperability landscape** in which **practice research disciplines** are **embedded** rather than an afterthought (OTHER)
- **Bringing together voices** from many interested communities to form the **PR Voices Choir** and working with them to identify what **Findable, Accessible, Interoperable and Re-usable (FAIR)** and **transparent** research (which may also be **Open**) looks like for these disciplines and which respects all contributors and their intellectual property.

PR VOICES PROJECT OVERVIEW



1. Repositories

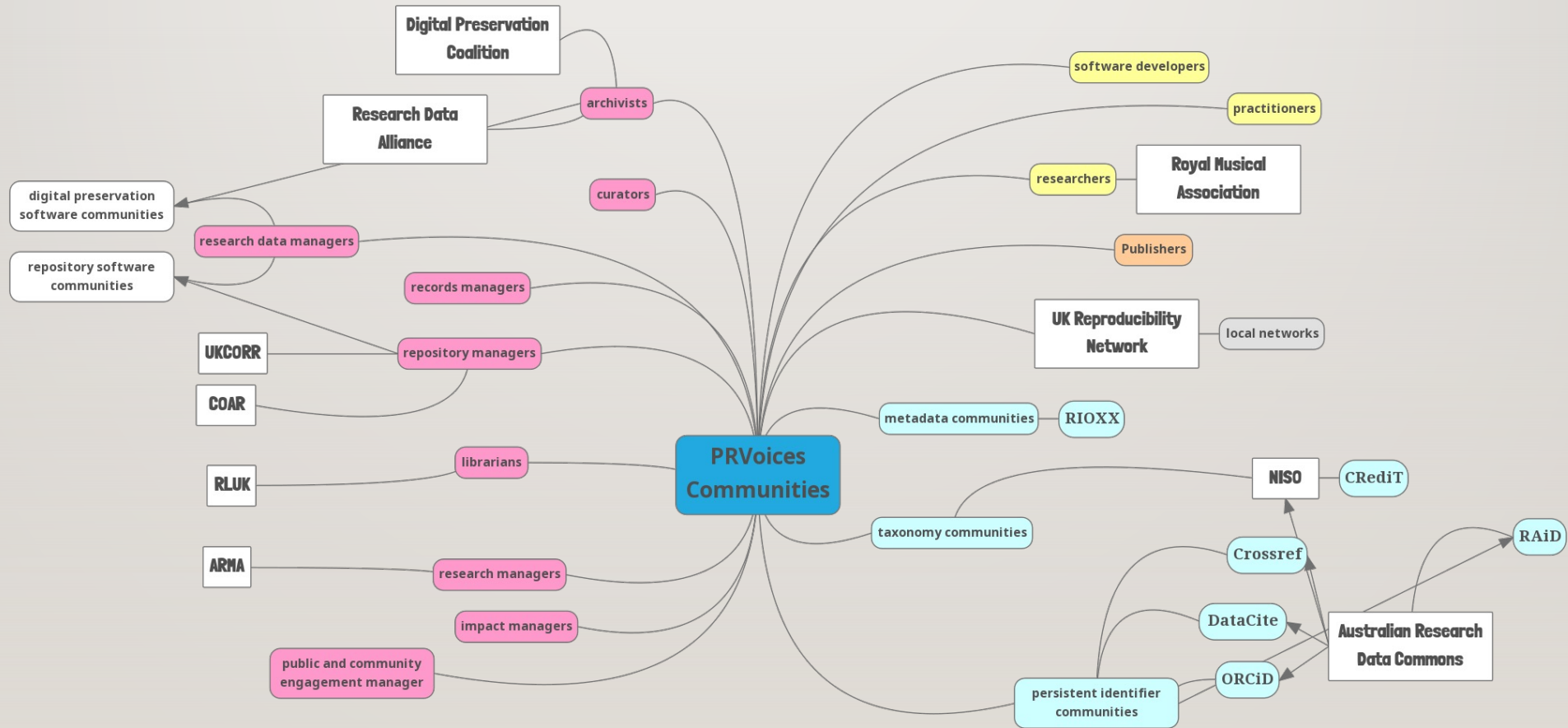


2. Metadata & Persistent Identifiers



3. Creating a Practice Research Community of Practice

ENGAGEMENT WITH THE PRACTICE RESEARCH COMMUNITY OF PRACTICE



METADATA, PERSISTENT IDENTIFIERS (PIDS) AND A TAXONOMY WORKSHOP

Work with existing open standards (rather than creating new ones)

Prioritised DataCite, RAiD and CRediT

Had presentations from all three at the workshop AND the researcher/practitioner perspective (see <https://blog.westminster.ac.uk/prvoices/workshop-metadata-persistent-identifiers-pids-and-a-taxonomy/> for the details and links to presentations)

PRAG-UK REPORT 2 RECOMMENDATIONS: PROJECT (COLLECTION, PORTFOLIO), EDITION (VERSION)

A single practice research item type – called ‘project’ which represents the multi-component nature of practice research (p13)

A singular research component file and multiple subset research components (p15-16)

Use of ‘edition’ to deal with changes to outputs that are developed over time (p17)

It could include (p6):

- Summary/Abstract
- Context / Introduction
- Research inquiry / Questions in practice
- Method statements
- Practice, description of practice, or documentation of practice (as a proxy)
- Insights / Discussion of ways of knowing
- Conclusion and references

PRVOICES FINDINGS - I

OUTPUT ('PRODUCT' VS 'PROCESS' VS 'DOCUMENTATION')

- **Portfolio output type (existing)** with the enhanced portfolio overlay – this includes contributors (collaborators and could include participants)
- **Exhibition type (existing)** – actually event type which covers public engagement, design charettes, residencies – picks up some time-based activities – could potentially merge event and ‘practice research item’ to become a non-text item record? But a bit OTHER-ISH?
- **What is different from a text-based output metadata record?** – date field/s, journal articles include space to upload different versions, the language describing the metadata elements
- **What’s missing? Process / timeline item type?** In the Haplo/Cayuse record this information is recorded within the ‘enhanced template’ – we are working on identifying what should be in the schema that is currently only in the overlay template. How the ‘research narrative’ looks vs ‘process’?

PRVOICES FINDINGS - 2

CONTRIBUTORS, OUTPUTS AND THE RELATIONSHIPS BETWEEN THEM

- **Acknowledgement of all contributor roles** including participants important – along with contextual statement
- The desire to capture **PEOPLE** and **CONTENT** alongside the project (interactive platform) rather than retrospectively retrieving activity info
- Platform as accompanying scribe, not terminal destination
- A need to carry out a **digital preservation** pilot to understand how this impacts on these output types

SUGGESTED CHANGES TO PORTFOLIO LANDING PAGE

Less text & more visual

Portfolio items linked from landing page

Embedded videos moved here

'Share this'

'Cite this'

Key facts
A multipart project aimed at recognising the contribution of Jamaican music to British culture. The output comprises:

Exhibition
Bass Culture 70/50 (2018), multimedia exhibition, October 25 - November 23, 2018

Film
Bass Culture (2018) documentary film (59 mins), premiered November 22, 2018

Book chapter
"Bass Culture, An Alternative Soundtrack to Britishness", in Stratton, J, and Zuberi, N (eds), *Black Popular Music in Britain Since 1945*, Ashgate, 2014, pp 100-114.


Website/online resource
Launched September 9, 2017. basscultureduk.com

Roles
AHRIC principal investigator; curator (Bass Culture70/50 exhibition); co-producer and project facilitator (Bass Culture, the film); author (book chapter); lead developer and lead interviewer (Bass Culture website and online resource)

Venues
Bass Culture70/50 exhibition, Ambika P3, London, October 25 - November 23, 2018
Bass Culture, a documentary film, premiered at Ambika P3, November 22, 2018, as part of Bass Culture 70/50 followed by a public screening at Regent Street Cinema, London

Other screenings with Q&A include:
University of London Institute in Paris, October 2018
Solent University, Southampton, June 12, 2019
Regent Street Cinema, London, March 2019
Brighton Film Festival, CineCity, Sussex University, November 2018


Funding
AHRIC research grant: Bass Culture AH/N001826/1- ES33,032



Portfolio items


- Bass Culture film
- Bass Culture 70/50
- basscultureduk.com
- Bass Culture: an alternative soundtrack to Britishness
- Ticket Master: State of Play Grime Report
- Jazz Jamaica All Stars: The Trojan Story... Live Event

Related videos





Website/online resource
Launched September 9, 2017. basscultureduk.com

Share this



Cite



EXPANDED EVENT OUTPUT TYPE

New Event: Miss Nina Watts

Please complete this form as fully as possible. Fields may be left blank for information that is not applicable to this output. The University repository will be alerted of new or edited outputs.

+ Title of work

+ Type
Exhibition
Residency
Design Charrette
Public Engagement

+ Creators

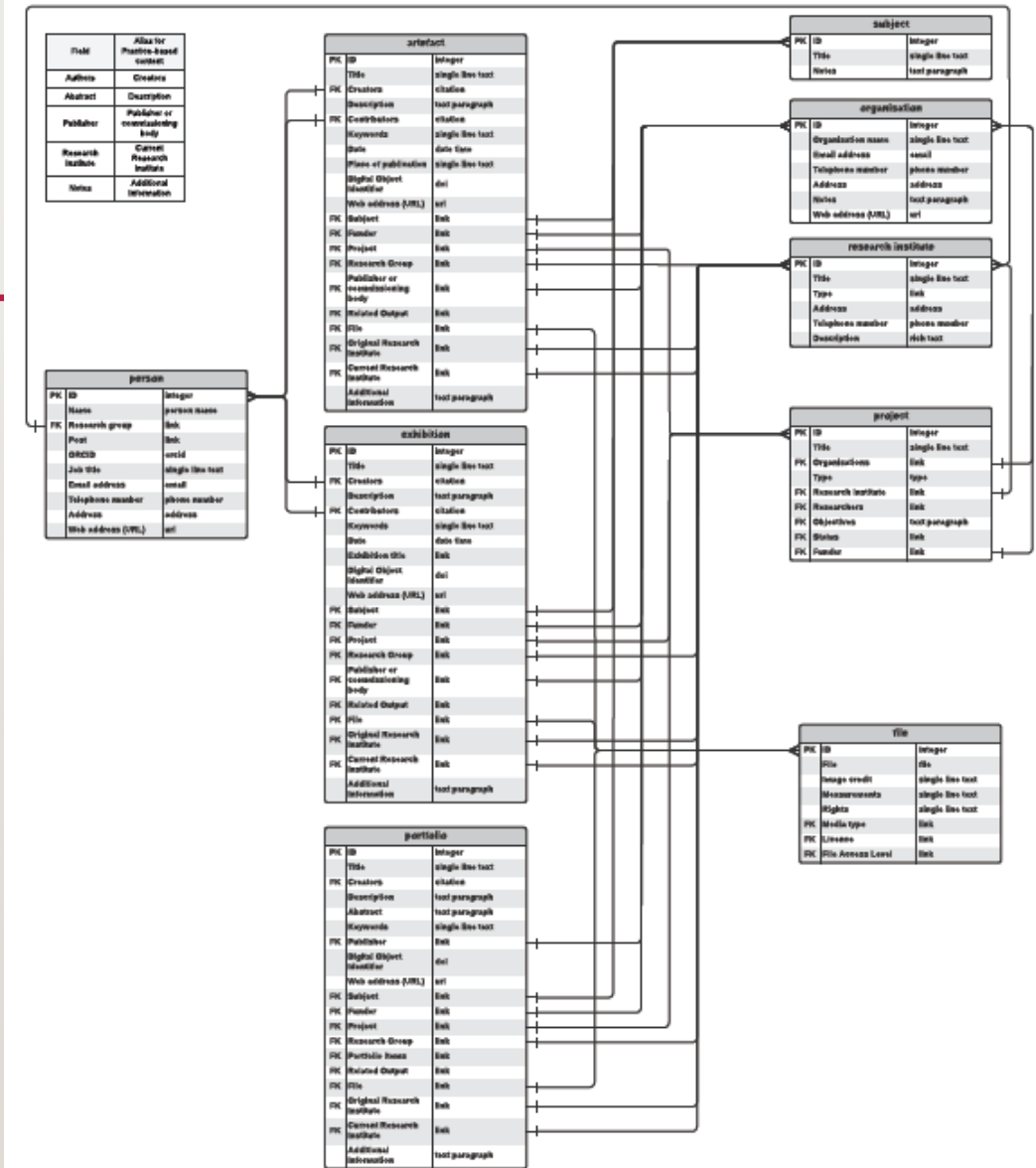
Change Exhibition to Event

Added sub-types -
Exhibition, Residency,
Design Charrette, Public
Engagement

HAPLO / CAYUSE SCHEMA

- Working on the articulation of the schema – due to the flexibility of the software – has taken much longer than anticipated
- Identifying what isn't in the schema that needs to be vs what can be included in the enhanced template text (display)
- Will be mapping this across to the BL's Shared Research Repository for cultural and heritage organisations in the next week or so

Repository ERD - Draft



METADATA,
PERSISTENT
IDENTIFIERS (&
A TAXONOMY)



How do practice research output types map to the current DataCite schema? What schema changes could be made to support practice research better?

resourceTypeGeneral – 28 permitted values and other plus free text

Creator vs Contributor – where does collaborator map? Work with CRediT on this rather than try and change within DataCite?

relationType – 34 relation types – do they adequately reflect what is needed?

Exhibition (now Event) = *resourceTypeGeneral* mapping: Event?

Portfolio / Collection = *resourceTypeGeneral* mapping: Collection

How is the portfolio item type conceptualised? Is it a document itself, or a collection of other records? Or some combination?

How does a portfolio **record** evolve over time?

Can a portfolio be conceptualised as a research activity/project (i.e. use RAiD, not DOI)?

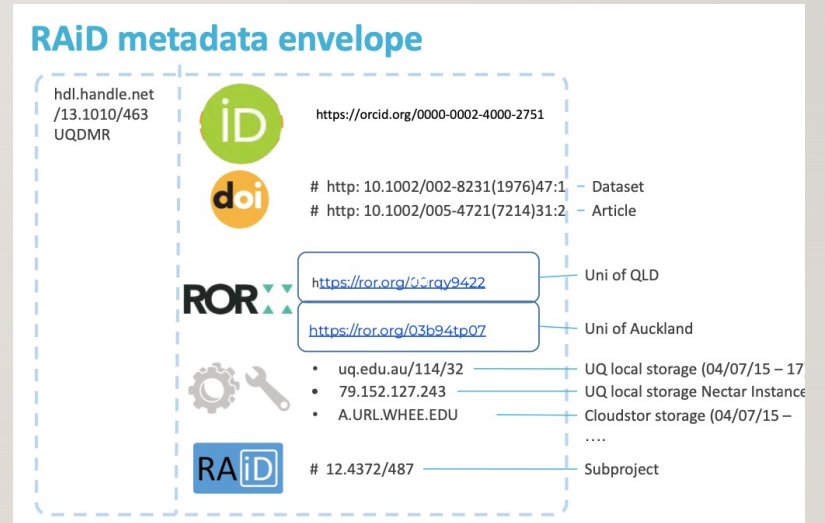
- RAiD specifically designed as an "envelope" to group together other outputs/activities

RESEARCH ACTIVITY IDENTIFIER (RAiD)

“RAiD is a unique and persistent identifier for research projects. It acts as a container for research project activities by collecting identifiers for the people, publications, instruments and institutions that are involved.”

<https://www.raid.org.au>

RAiD metadata envelope slide from https://blog.westminster.ac.uk/prvoices/wp-content/uploads/sites/97/2022/07/RAiD_-_Tracking-research-projects-for-UK-PRVoices-May-2022.pdf





CRT

CONTRIBUTOR ROLES TAXONOMY (CRediT)

Conceptualization

Data curation

Formal analysis

Funding acquisition

Investigation

Methodology

Project administration

Resources

Software

Supervision

Validation

Visualization

Writing - original draft

Writing - review & editing

WHAT DOES THIS MEAN FOR DATACITE?

- Schema review impact on resource types
- Review how the PRVoices (Haplo (Cayuse) repository test system) work connects with the PRAG-UK Report 2 recommendation of a single 'practice research output type' alongside a RAiD pilot
- CRediT work on contributors informs updates
- Better situate the person in the work and narrative – improve context, remove the concept of 'OTHER'
- Improved engagement with practice research community

NEXT STEPS



Finishing the data analysis



Work with the SPARKLE team at Leeds to align our approaches



Illustrate the Cayuse (Haplo) PR schema and map to the BL's Shared Repository



Finalise final report of findings and recommendations



CONTACT US

~~@prvoices~~

<https://blog.westminster.ac.uk/prvoices/> and case study <https://t.co/oi0UNHdtM6>

J.Evans2@westminster.ac.uk