

100 MILE CITY

Build a street based, linear city a hundred miles long, 200 metres wide and 4 storeys high. Wrap it round London.

Give it little factories, schools, houses and shops laid out in terraces along intimately scaled streets and around squares. Make it a dense, intense edge to London, a confident purposeful boundary fronting a revitalised productive countryside.

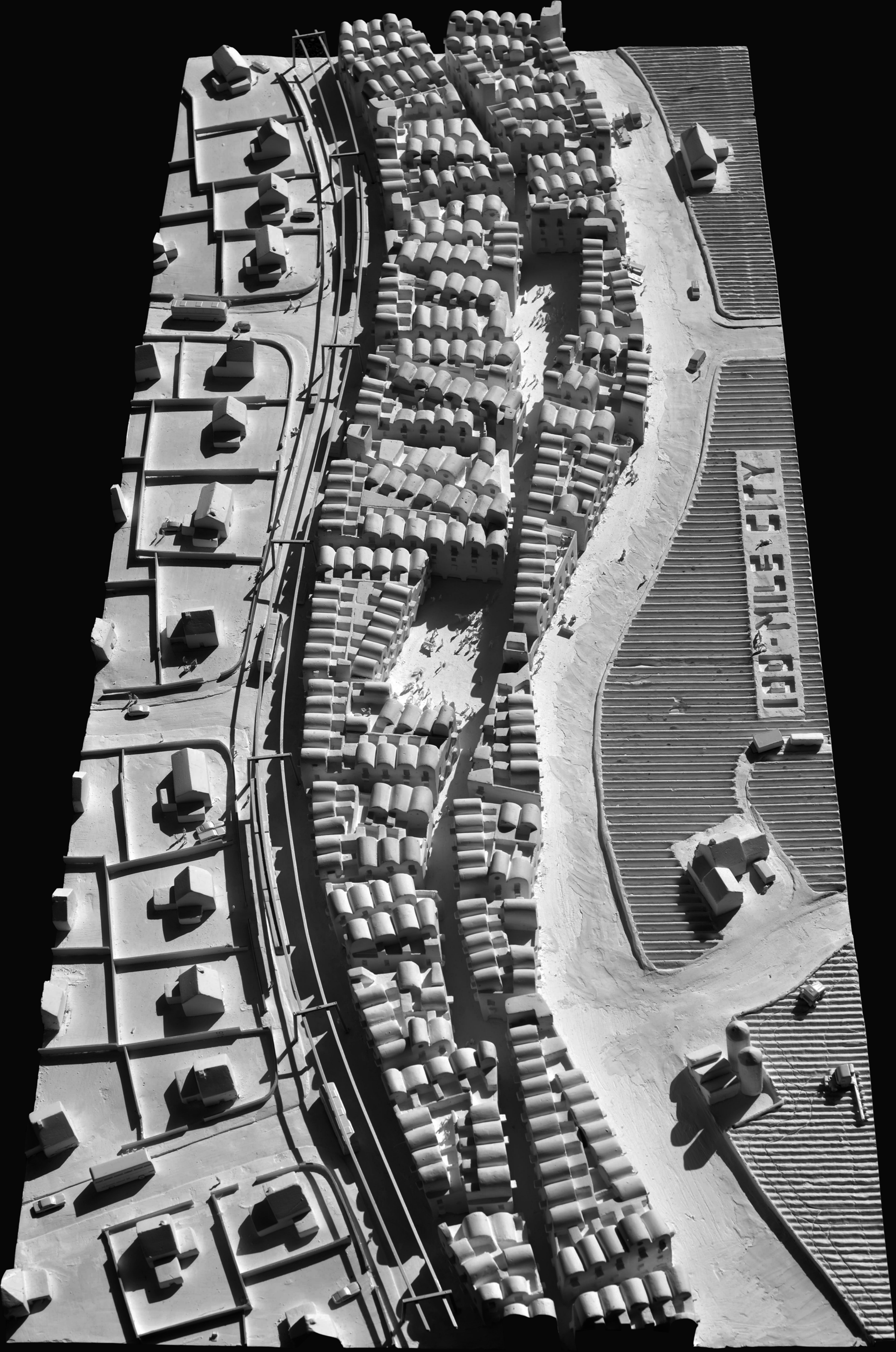
Hundred Mile City is a linear Barceloneta, a circular Rome, a stretched Porto. Suburbia reprogrammed, hybridized, compressed. Catalytic urbanism en flique. Ride the Hundred Mile high speed orbital monorail, souped up sky fly Circle Line – the loose ends and frayed edges of London's transport system, its isolated city edge train and bus termini instantly, meaningfully, usefully connected with circus ride technology (Bexley to Brentford in 40 minutes) super-functional, superfast and super fun.

And, in time, watch our city grow inwards, spreading like a wildfire through wasteful, anti-social, car choked suburbia. Eastwards from Richmond, west across the Newham Marshes, up from Eltham, across the hills of Greenwich and the empty green swards and golf courses of Enfield.

Metro land consolidated, back filled, integrated and urbanised. London for 40 million people. A kind of inside-out plan Voisin...Ville Radieuse – Blighty style.





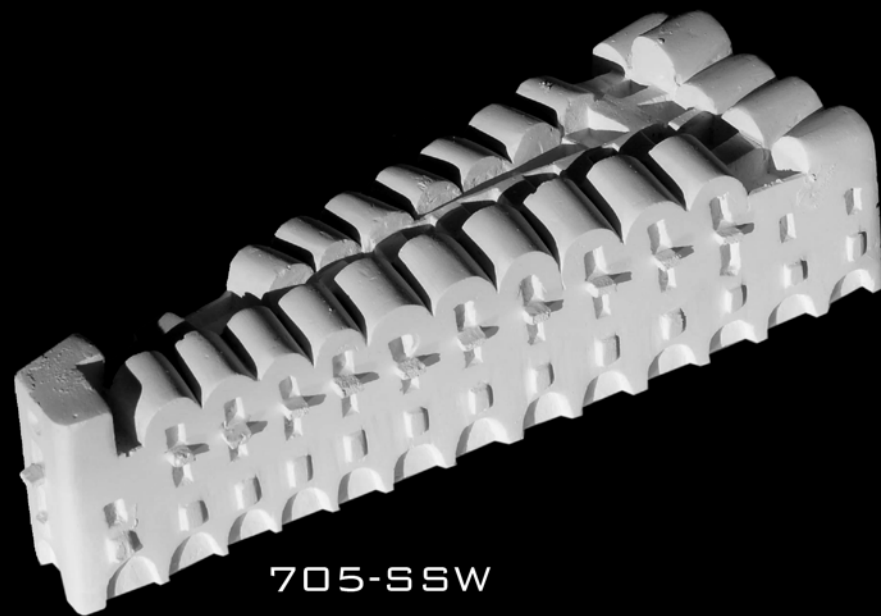




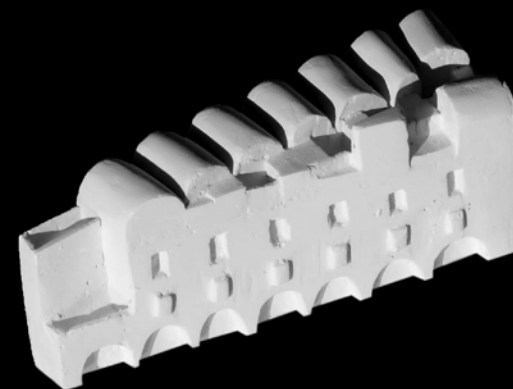


BLOCKS 703

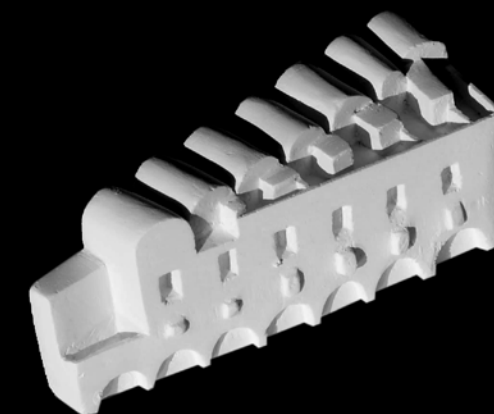
+ 704 W.S.W



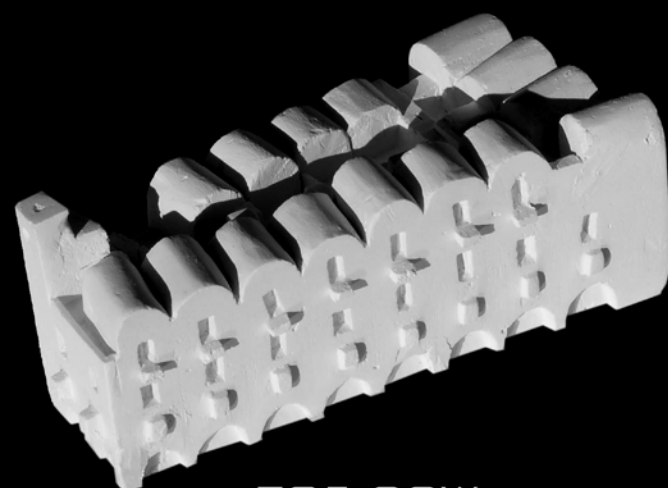
705-SSW



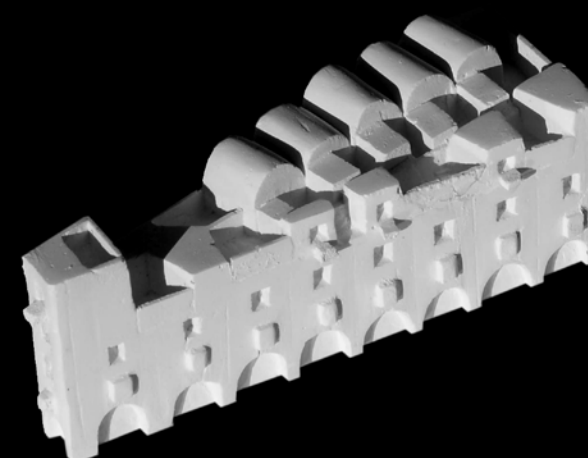
745-SSW



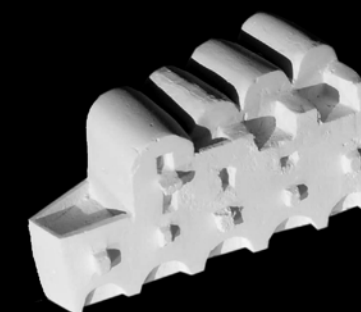
755-SSW



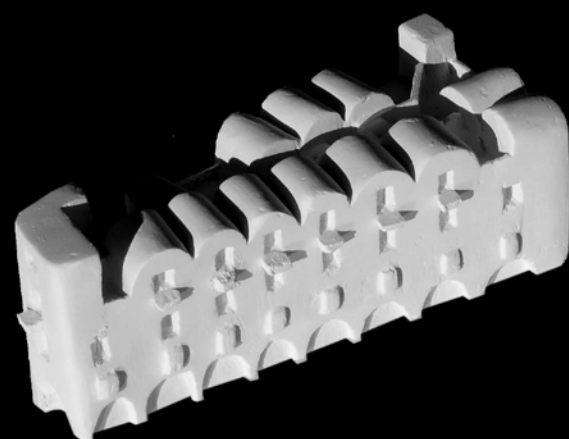
785-SSW



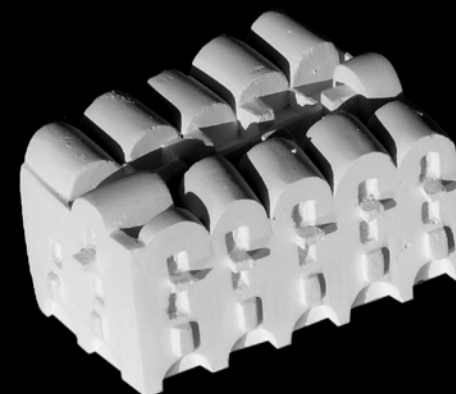
798-SSW



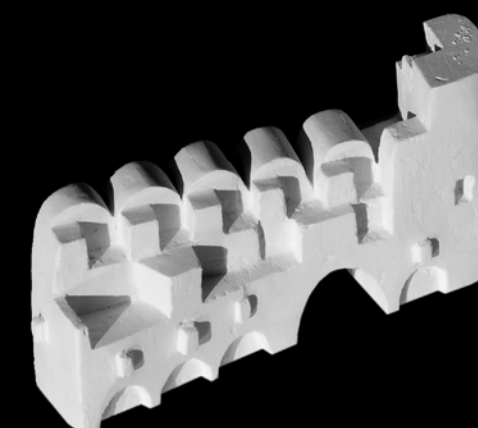
775-SSW



754-SSW



798-SSW



723-SSW

